

FACT BOOK 2016

WEST CHESTER UNIVERSITY OF PENNSYLVANIA

**West Chester University of Pennsylvania
Office of Institutional Research**

**887 South Matlack Street
West Chester, PA 19383
Telephone (610) 436-2835**

Fax (610) 436-2635

Introduction & Acknowledgements

This Fact Book provides some of the most commonly requested information about West Chester University. Much of the information is drawn from the University's database and state mandated reports. Other offices and sources used are cited throughout the document. The cooperation of those offices and sources is much appreciated.

The Fact Book is divided into several chapters: Admissions, Enrollment, Retention/Graduation Rates, Academic Degree Programs & Accredited Programs, Graduation/Degree Information, and Resources (including financial aid), Services and Facilities.

Comments and suggestions about additional information that might be included are much appreciated. Please forward your suggestions to ninamdar@wcupa.edu.

Additional institutional information is available on our website: <http://www.wcupa.edu/infoservices/oir/>

Table of Contents

Table of Contents	3-4
WCU Quick Facts	5
GENERAL INFORMATION	
About the University and Its Mission	7-9
West Chester University Organizational Chart	10
ADMISSIONS	
Undergraduate Admissions Standards	12
Admission Application Statistics	13-14
First Time Full-Time First Year by Admission Type	15
SAT Score Distribution: Fall 2016	16-17
SAT Average Scores	17
ACT Score Distribution: Fall 2016	18-19
ACT Average Scores	19
Feeder High Schools: Fall 2016	20
Feeder Colleges: Fall 2016	21
First Time First Year Enrollment by County	22
First Time First Year Enrollment by State	23
First-Time First Year Admission Yield Statistics	24
First-Time First Year Admission Yield Chart	25
First-Time Transfer Admission Yield Statistics	26
First-Time Transfer Admission Yield Chart	27
ENROLLMENT	
Head Count Enrollment by Race/Ethnicity and Gender	29

To be continued.....

Table of Contents (continued)

ENROLLMENT (continued)

Head Count Enrollment by Degree Status and College Fall 2016	30
Head Count Enrollment by State: Fall 2013 to 2016	31-32
Enrollment by County for Pennsylvania Residents: Fall 2016	33
Head Count Enrollment by Ethnicity and Gender Fall 2012 to Fall 2016	34
Head Count Enrollment by College : Fall 2012 to Fall 2016	35-36
Head Count Enrollment by Student Level: Fall 2011 to 2016	37-38
Credit Hours and Student FTE Enrollment	39-40

RETENTION AND GRADUATION

Retention & Graduation Rates for First-Time, Full-Time First Year: University Summary	42
Second-Year Retention Rates for First-Time, Full-Time First Year by Race/Ethnicity and by Gender	43
Four and Six-Year Graduation Rates by Race/Ethnicity	44
Four and Six-Year Graduation Rates by Gender	45

ACADEMIC AND DEGREE PROGRAMS

Undergraduate Degrees and Certificate Programs	47-48
Graduate Degrees and Certificate Programs	49-50
Professional and Program Accreditations	51-52

DEGREES CONFERRED

Undergraduate and Graduate Degrees Conferred by College and Academic Plan	54-68
---	-------

RESOURCES, SERVICES & FACILITIES

Tuition and Fees	70
Library Resources	72

Quick Facts

West Chester University
West Chester, PA 19383
Telephone (610) 436-1000
<http://www.wcupa.edu/>

Founded	1871
Interim President	Christopher M. Fiorentino
University Accreditation	Middle States Commission on Higher Education
Fall 2016 Enrollment	17,010*
Undergraduate	14,402
Graduate	2,608
Fall 2016 Credit Hours	218,801.5
Undergraduate	201,596.5
Graduate	17,205.0
Undergraduate Degree Programs	118
Undergraduate Certificates	5
Undergraduate Non-Degree, Teaching Certification	34
Graduate Degree Programs	95
Master's Programs	91
Doctoral Programs	4
Graduate Certificates	38
Graduate Non-Degree, Teaching Certification, Professional Growth, Letter of Completion	75
Degrees Awarded in 2015-2016	4,131
Bachelor's	3,407
Master's	724

*Does not represent IPEDS unduplicated total headcount. IPEDS unduplicated total headcount is 17,006.

University started Doctoral Programs in 2012.

Degree/Non Degree/Certificate etc. program counts displayed above include only those programs which are offered to incoming new students.



General Information

About the University and Its Mission

The West Chester University Mission Statement

West Chester University, a member of the Pennsylvania State System of Higher Education, is a public, regional, comprehensive institution committed to providing access and offering high-quality undergraduate education, select post-baccalaureate and graduate programs, and a variety of educational and cultural resources for its students, alumni, and citizens of southeastern Pennsylvania.

The West Chester University Values Statement

West Chester University is committed to attracting, enrolling, and graduating quality students from a wide variety of educational, cultural, and economic backgrounds. This endeavor requires the University to attract and retain highly qualified faculty and staff and to provide each member of the University community with learning and leadership development opportunities. To this end, the University supports and encourages programs which benefit all people and which seek to eradicate discrimination and injustice. We treasure what we believe to be the highest principles of American society: the worth and uniqueness of each individual, the belief that success is to be earned by individual effort put forth in an environment founded on equality of opportunity, and the appreciation of the ideal of an inclusive society.

We believe that it is incumbent upon all members of our community—staff, students, faculty and administrators—to conduct themselves with civility toward one another at all times. We value the special talents and contributions of each member of our community. We further affirm the worth and dignity of each member and the shared responsibility of all to treat each other as individuals, with respect and courtesy.

As a university owned by the citizens of Pennsylvania, we value our mission to provide the best educational opportunities possible which will enable the University community to successfully address the concerns of a global society. To this end, West Chester University seeks to provide diligent advising for students and to focus on teaching students to think clearly and critically, to make logical and ethical judgments, and to communicate effectively with others.

West Chester University's community strongly supports the principles of academic integrity and academic responsibility, viewing both as the province of every member of the campus community. We hold the highest esteem for teaching directed toward student learning and affirm that mastery of content as well as mastery of teaching skills necessary to communicate such content is paramount.

This values statement is intended to be a living document which will serve West Chester University as it changes and evolves in the coming years.

About West Chester University of Pennsylvania

West Chester University offers bachelors and masters degrees in the arts and sciences, teacher training and certification, advanced study preparation in fields such as medicine and law, education for specific professions, and continuing education.

Total enrollment at West Chester University includes approximately 14,402 undergraduate students and 2,608 graduate students. This does not represent the IPEDS unduplicated headcount. The IPEDS unduplicated total headcount is 17,006. While most undergraduates are recent high school graduates preparing for career objectives, many others are older individuals, including veterans and homemakers, who either never before had the opportunity for a college education or whose schooling was interrupted.

Most students are residents of Pennsylvania but students from other states and foreign countries are welcome. The student body at West Chester University represents a cross section of many ethnic, racial, and religious groups and includes students from all socioeconomic levels.

Like the world around it, West Chester University is constantly transforming. The school continues to broaden and modify the nature and number of its programs to reflect the needs of its students in their endeavor to prepare themselves for success and fulfillment in life.

The History of West Chester University of Pennsylvania

Founded in 1871, West Chester University began as West Chester Academy, a private, state-aided school that existed from 1812 to 1869. The academy enjoyed strong support from the highly intellectual Chester County Cabinet of the Natural Sciences of the pre-Civil War decades. It was recognized as one of Pennsylvania's leading preparatory schools, and its experience in teacher training laid the groundwork for the normal school years that were to follow.

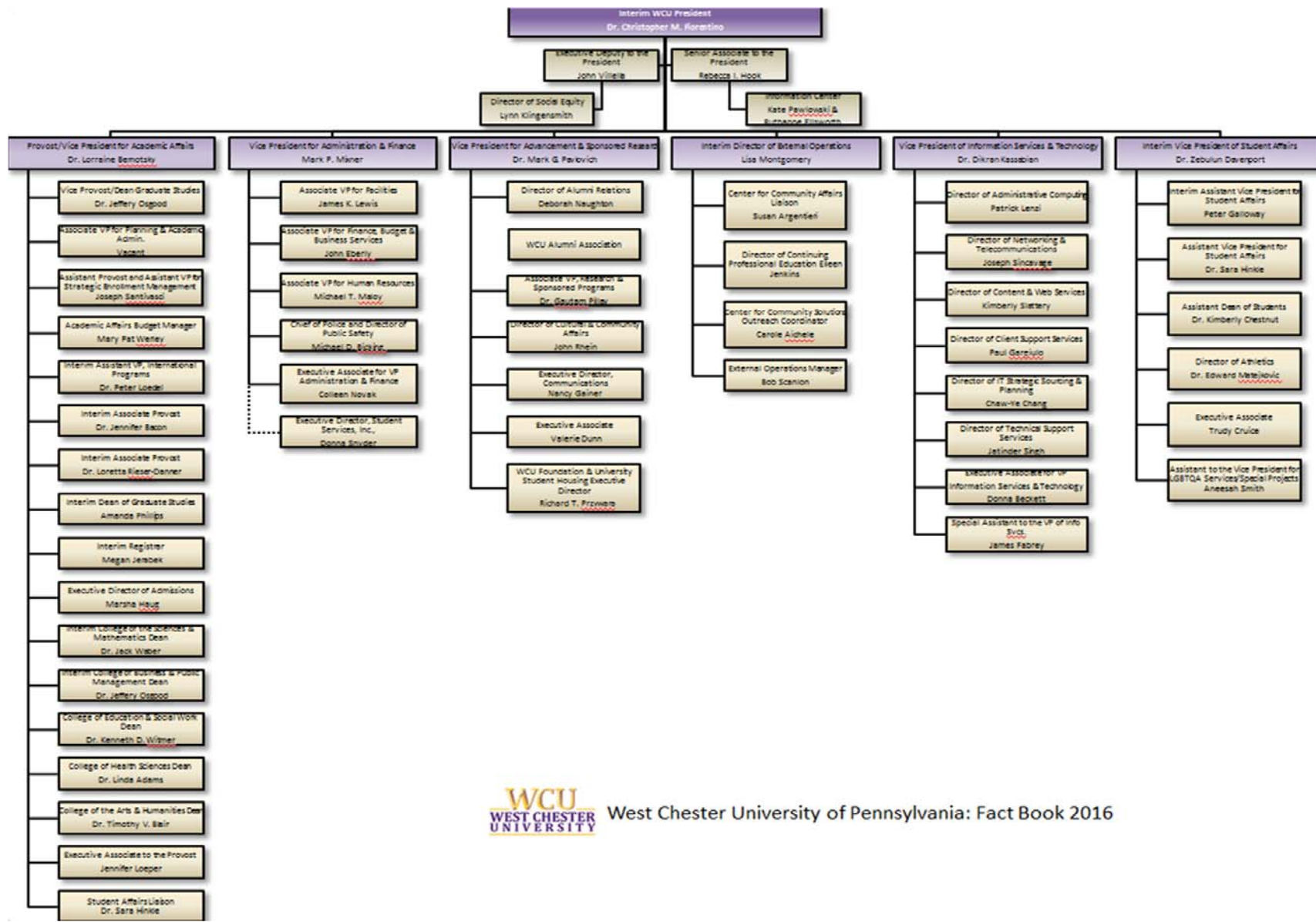
As the state began to take increasing responsibility for public education, the academy was transformed into West Chester Normal School, still privately owned but state certified. The normal school admitted its first class, consisting of 160 students, on September 25, 1871. In 1913, West Chester became the first of the normal schools to be owned outright by the Commonwealth.

West Chester became West Chester State Teachers College in 1927 when Pennsylvania initiated a four-year program of teacher education. In 1960, as the Commonwealth paved the way for liberal arts programs in its college system, West Chester was renamed West Chester State College, and two years later introduced the liberal arts program that turned the one-time academy into a comprehensive college.

In recognition of the historic merit of the campus, in 1981 the West Chester State College Quadrangle Historic District was placed on the National Register of Historic Places. The buildings included in this historic district are Philips Memorial Building, Ruby Jones Hall, Recitation Hall, and the Old Library. Except for Philips, these buildings are all constructed of native Chester County serpentine stone.

West Chester State achieved another major milestone with passage of the State System of Higher Education bill. West Chester became one of the 14 universities in the State System of Higher Education on July 1, 1983. Along with its new name -- West Chester University of Pennsylvania of the State System of Higher Education -- the institution acquired a new system of governance and the opportunity to expand its degree programs.

Organizational Chart



West Chester University of Pennsylvania: Fact Book 2016



ADMISSIONS

Undergraduate Admissions Standards

West Chester University prides itself on the holistic approach used in evaluating applicant credentials. Each application is reviewed individually, and we carefully consider scholastic performance and academic preparation to determine an individual's potential for success.

For regular admission as a first-year student we recommend successful completion of a college preparatory curriculum in high school, honors and AP classes are a plus, rank in class in the 60th percentile or better, a grade point average of 3.44+, and a minimum combined SAT score of 1054 or better. It is important to realize that these factors are guidelines for consideration. The academic profile of the regular admits who enroll at West Chester University is a mean SAT combined score of 1067 (scores used for Admission Decision), a rank in the top 34% of their class or 66th percentile, and a grade point average of 3.49.

Applicants who do not meet regular admissions standards may be considered for a special admissions program if appropriate or denied admission and counseled to enroll at another college or university for a minimum of 24-30 credits before reapplying as a transfer student.

Transfer applicants must have a minimum grade point average of 2.00 for admissions consideration. The majority of our transfers have a Cumulative GPA of 2.50 or better prior to transferring to the University. Some of our academic programs require a higher grade point average and specific course prerequisites. Pennsylvania Community College students who have earned an Associate of Arts or Associate of Science degree and students who have completed 12 or more transferable credits from a State System University with a 2.00 or above have an Academic Passport that provides entry into any university in the State System of Higher Education. For more information on admissions requirements and the Academic Passport, please contact the Office Admissions at (610) 436-3411 or e-mail ugadmiss@wcupa.edu

Admission Application Statistics for First Time, Full Time, First Year Students Fall 2016

Race/Ethnicity	Fall 2015			Fall 2016			Total	
	Male	Female	Total	Male	Female	Total	Change	% Change
African American								
Applied	568	1,032	1,600	586	1,021	1,607	7	0.44%
Accepted	256	485	741	264	499	763	22	2.97%
Enrolled	83	168	251	93	170	263	12	4.78%
Asian								
Applied	128	264	392	153	296	449	57	14.54%
Accepted	72	147	219	91	193	284	65	29.68%
Enrolled	15	23	38	15	38	53	15	39.47%
White								
Applied	3,365	5,964	9,329	3,277	5,727	9,004	-325	-3.48%
Accepted	2,065	3,597	5,662	2,290	3,896	6,186	524	9.25%
Enrolled	681	1,150	1,831	720	1,123	1,843	12	0.66%
Hawaiian/Pacific Islander								
Applied	6	8	14	6	4	10	-4	-28.57%
Accepted	5	2	7	2	2	4	-3	-42.86%
Enrolled	2	0	2	1	1	2	0	0.00%
Hispanic or Latino								
Applied	260	553	813	280	585	865	52	6.40%
Accepted	167	335	502	154	324	478	-24	-4.78%
Enrolled	68	91	159	57	90	147	-12	-7.55%
Multiracial								
Applied	128	256	384	161	297	458	74	19.27%
Accepted	80	150	230	98	189	287	57	24.78%
Enrolled	35	52	87	43	54	97	10	11.49%
Native American								
Applied	6	9	15	8	16	24	9	60.00%
Accepted	1	2	3	1	5	6	3	100.00%
Enrolled	0	1	1	0	0	0	-1	-100.00%

to be continued.....

**Admission Application Statistics for First Time, Full Time, First Year Students: Fall 2016
(continued)**

Race/Ethnicity	Fall 2015			Fall 2016			Total	
	Male	Female	Total	Male	Female	Total	Change	%Change
Non-Resident Alien								
Applied	10	15	25	16	20	36	11	44.00%
Accepted	5	11	16	6	9	15	-1	-6.25%
Enrolled	1	6	7	1	4	5	-2	-28.57%
Not Supplied								
Applied	21	31	52	59	97	156	104	200.00%
Accepted	9	19	28	46	58	104	76	271.43%
Enrolled	3	2	5	14	17	31	26	520.00%
Total								
Applied	4,492	8,132	12,624	4,546	8,063	12,609	-15	-0.12%
Accepted	2,660	4,748	7,408	2,952	5,175	8,127	719	9.71%
Enrolled	888	1,493	2,381	944	1,497	2,441	60	2.52%

First Time, Full Time, First Year Students by Admission Type

Admittance Type	2012		2013		2014		2015		2016	
	N	%	N	%	N	%	N	%	N	%
Regular	1,935	83.2%	1,893	82.6%	1,968	84.0%	1,996	83.8%	1,961	80.3%
ADP ACT 101	51	2.2%	73	3.2%	68	2.9%	75	3.1%	69	2.8%
ADP Non-ACT 101	103	4.4%	108	4.7%	112	4.8%	106	4.5%	123	5.0%
Special Admission	237	10.2%	218	9.5%	196	8.4%	204	8.6%	288	11.8%
Total	2,326		2,292		2,344		2,381		2,441	

SAT Score Distribution: First Time, Full Time, First Year Students Fall 2016

SAT- Critical Reading Distribution

Score	2012		2013		2014*		2015*		2016*	
	N	%	N	%	N	%	N	%	N	%
700-800	28	1.2%	29	1.3%	28	1.4%	23	1.1%	36	1.7%
600-699	396	17.0%	363	15.8%	328	15.8%	322	15.4%	281	13.3%
500-599	1,260	54.2%	1,261	55.0%	1,165	56.3%	1,135	54.4%	1,078	51.1%
400-499	585	25.2%	576	25.1%	476	23.0%	542	26.0%	644	30.5%
300-399	57	2.5%	62	2.7%	73	3.5%	65	3.1%	70	3.3%
200-299	0	0.0%	0	0.0%	0	0.0%	0	0.0%	0	0.0%
Total	2,326	100%	2,291	100%	2,070	100%	2,087	100%	2,109	100%

SAT- Mathematics Distribution

Score	2012		2013		2014*		2015*		2016*	
	N	%	N	%	N	%	N	%	N	%
700-800	33	1.4%	38	1.7%	22	1.1%	26	1.2%	17	0.8%
600-699	478	20.6%	495	21.6%	421	20.3%	395	18.9%	364	17.3%
500-599	1,348	58.0%	1,293	56.4%	1,173	56.7%	1,137	54.5%	1,084	51.4%
400-499	428	18.4%	387	16.9%	383	18.5%	451	21.6%	573	27.2%
300-399	39	1.7%	78	3.4%	71	3.4%	78	3.7%	71	3.40%
200-299	0	0.0%	0	0.0%	0	0.0%	0	0.0%	0	0.0%
Total	2,326	100%	2,291	100%	2,070	100%	2,087	100%	2,109	100%

*Includes only scores used for admission decision.

SAT Score Distribution: First Time, Full Time, First Year Students Fall 2016 (continued)

SAT – Writing Distribution

Score	2012		2013		2014*		2015*		2016*	
	N	%	N	%	N	%	N	%	N	%
700-800	18	0.8%	21	0.9%	17	0.8%	27	1.3%	19	0.90%
600-699	335	14.7%	368	16.5%	288	13.9%	289	13.8%	242	11.50%
500-599	1,222	53.7%	1,127	50.6%	1,115	53.9%	1,020	48.9%	1,004	47.60%
400-499	633	27.8%	619	27.8%	556	26.9%	643	30.8%	728	34.50%
300-399	69	3.0%	90	4.0%	91	4.4%	105	5.0%	112	5.30%
200-299	0	0.0%	2	0.1%	3	0.1%	3	0.1%	3	0.10%
Total	2,277	100%	2,227	100%	2,070	100%	2,087	100%	2,108	100%

SAT Average Scores

	Critical Reading			Mathematics			Writing			Combined**		
	WCU	PA	US	WCU	PA	US	WCU	PA	US	WCU	PA	US
Fall 2007	525	493	502	533	499	515				1,059	992	1,017
Fall 2008	523	494	502	535	501	515	521	483	494	1,059	995	1,017
Fall 2009	523	493	501	535	501	515	524	483	493	1,059	994	1,016
Fall 2010	544	492	501	533	501	516	528	480	492	1,078	993	1,017
Fall 2011	536	493	497	542	501	514	528	479	489	1,078	994	1,011
Fall 2012	532	491	496	545	501	514	527	480	488	1,077	992	1,010
Fall 2013	534	494	496	545	504	514	528	482	488	1,079	998	1,010
Fall 2014*	532	497	497	542	504	513	524	480	487	1,074	1001	1,010
Fall 2015*	530	499	495	536	504	511	520	482	484	1,067	1,003	1,006
Fall 2016*	525	500	494	529	506	508	512	481	482	1,054	1,006	1,002

*Includes only scores used for admission decision.

**Combined Critical Reading and Mathematics scores.

ACT Score Distribution: First Time, Full Time, First Year Students Fall 2016

ACT- English Distribution

Score	2015		2016	
	N	%	N	%
1-10	0	0.0%	0	0.0%
11-20	79	27.1%	84	25.70%
21-30	190	65.3%	228	69.70%
31-36	22	7.6%	15	4.60%
Total	291	100%	327	100%

ACT- Math Distribution

Score	2015		2016	
	N	%	N	%
1-10	0	0.0%	0	0.0%
11-20	99	34.0%	97	29.70%
21-30	180	61.9%	222	67.90%
31-36	12	4.1%	8	2.40%
Total	291	100%	327	100%

ACT- Reading Distribution

Score	2015		2016	
	N	%	N	%
1-10	0	0.0%	0	0.0%
11-20	63	21.6%	72	22.0%
21-30	192	66.0%	207	63.3%
31-36	36	12.4%	48	14.7%
Total	291	100%	327	100%

ACT- Science Distribution

Score	2015		2016	
	N	%	N	%
1-10	0	0.0%	0	0.0%
11-20	64	22.0%	71	21.7%
21-30	212	72.9%	242	74.0%
31-36	15	5.2%	14	4.3%
Total	291	100%	327	100%

Starting Fall 2014, ACT scores are used for admission decision.
Above tables display only scores used for admission decision.

ACT Score Distribution: First Time, Full Time, First Year Students Fall 2016 (continued)

ACT- Composite Distribution

Score	2015		2016	
	N	%	N	%
1-10	0	0.0%	0	0.0%
11-20	63	21.6%	69	21.1%
21-30	219	75.3%	250	76.5%
31-36	9	3.1%	8	2.4%
Total	291	100%	327	100%

ACT Average Scores

	English			Math			Reading		
	WCU	PA	US	WCU	PA	US	WCU	PA	US
Fall 2014	23.3	22.1	20.3	22.8	22.8	20.9	25.0	23.0	21.3
Fall 2015	23.0	22.5	20.4	22.6	22.8	20.8	24.2	23.2	21.4
Fall 2016	22.9	22.6	20.1	22.6	23.0	20.6	24.2	23.6	21.3

	Science			Composite		
	WCU	PA	US	WCU	PA	US
Fall 2014	23.5	22.2	20.8	23.8	22.7	21.0
Fall 2015	23.1	22.5	20.9	23.3	22.9	21.0
Fall 2016	23.3	22.8	20.8	23.3	23.1	20.8

Starting Fall 2014, ACT scores are used for admission decision.

Above tables display only scores used for admission decision.

Feeder High Schools: Fall 2016

Pennsylvania High Schools With the Most Number of Entering First Year Students

<i>School</i>	<i>#</i>
West Chester East High School	39
Downingtown West	35
West Chester Bayard Rustin Hs	35
Bishop Shanahan High School	35
Haverford High School	32
Central Bucks High Sch South	32
North Penn High School	32
Unionville High School	29
Downingtown High School East	29
B Reed Henderson High School	27
Council Rock High School South	27
Kennett High School	26
Garnet Valley High School	26
Avon Grove High School	25
Archbishop Wood High School	24
Sun Valley High School	24
Owen J Roberts High School	23
Coatesville Area Senior Hs	23
Cumberland Valley High School	22
Penncrest High School	22
Upper Darby High School	21

<i>School</i>	<i>#</i>
Central Bucks High School East	21
Spring-Ford Senior High School	20
Neshaminy High School	19
Central Bucks High School West	18
Marple Newtown High School	18
Monsignor Bonner-Archb Pren Hs	18
Central Dauphin High School	17
Pennsbury High School	17
Cardinal O'Hara High School	17
Hatboro-Horsham High School	17
Radnor High School	16
Strath Haven High School	16
Pope John Paul II High School	16
Upper Dublin High School	15
Lansdale Catholic High School	15
Roman Catholic High School	15
Parkland High School	15
Norristown Area High School	15
Conestoga High School	14
Perkiomen Valley High School	14
Methacton High School	14

<i>School</i>	<i>#</i>
Exeter Township Senior Hs	14
Plymouth-Whitemarsh Hs	14
Archbishop Carroll High School	14
Ridley High School	14
Upper Merion Area High School	13
Great Valley High School	13
Springfield High School	13
Phoenixville Area High School	13
Cheltenham High School	13
Holy Cross High School	13
Padua Academy	12
Wissahickon High School	12
Bensalem High School	12
Souderton Area High School	12
Oxford Area High School	12
Pennridge High School	12
Central High School	12
Easton Area High School	12
Abington High School	11

Feeder Colleges: Fall 2016

Institutions Previously Attended With the Most Number of New Fall Undergraduate Transfer Students

[Excludes students who transitioned from non-degree to degree as well as Transfers with first degree at WCU]

Name	Count	Percent	Type	State
Delaware County Community College	387	26.9%	2 Year Public	PA
Montgomery County Community College	146	10.1%	2 Year Public	PA
Community College of Philadelphia	96	6.7%	2 Year Public	PA
Bucks County Community College	70	4.9%	2 Year Public	PA
Pennsylvania St Univ. University Park	61	4.2%	2 Year Public	PA
Harrisburg Area Community College	46	3.2%	4 Year Public	PA
Millersville Univ Pa	23	1.6%	2 Year Public	PA
Northampton County Area Community College	22	1.5%	4 Year Public	PA
All Military	21	1.5%	2 Year Public	--
Bloomsburg University of Pennsylvania	21	1.5%	4 Year Public	PA
Indiana University of Pennsylvania	20	1.4%	4 Year Public	PA
Lehigh Carbon Community College	19	1.3%	4 Year Public	PA
Shippensburg University	19	1.3%	2 Year Public	PA
Kutztown University	18	1.2%	4 Year Public	PA
Temple University	16	1.1%	4 Year Public	PA
Reading Area Community College	12	0.8%	4 Year Public	PA
Lock Haven Univ Pa	10	0.7%	2 Year Public	PA
Widener University	10	0.7%	4 Year Public	PA
Gwynedd-Mercy College	9	0.6%	4 Year Private	PA
Alvernia College	8	0.6%	4 Year Private	PA
Brookdale Community College	8	0.56%	2 Year Public	NJ
East Stroudsburg University	8	0.6%	4 Year Public	PA
Harcum College	8	0.6%	4 Year Public	PA
Raritan Valley Community College	7	0.49%	2 Year Private	NJ
Cabrini College	6	0.4%	4 Year Public	PA
Immaculata University	6	0.4%	4 Year Private	PA
In-State Generic College	6	0.4%	4 Year Private	PA
Lackawanna College	6	0.4%	2 Year Public	PA
University of Pittsburgh	6	0.4%	4 Year Private	PA
Valley Forge Military College	6	0.4%	4 Year Private	PA
West Chester University PA	6	0.4%	4 Year Public	PA
West Virginia Univ Morgantown	6	0.4%	4 Year Public	WV
Cecil Community College	5	0.3%	4 Year Private	MD
Drexel University	5	0.3%	4 Year Private	PA
James Madison University	5	0.3%	4 Year Private	VA
La Salle University PA	5	0.3%	4 Year Public	PA
Luzerne County Community College	5	0.3%	2 Year Public	PA
Neumann College	5	0.3%	4 Year Private	PA
York College of PA	5	0.3%	4 Year Private	PA
Burlington County College	4	0.3%	2 Year Public	NJ
Delaware Valley College Sci Agric	4	0.3%	2 Year Public	PA
Duquesne University	4	0.3%	4 Year Private	PA
Eastern University	4	0.3%	4 Year Private	PA
Florida Atlantic University	4	0.3%	4 Year Private	FL
Gloucester County College	4	0.3%	2 Year Public	NJ
International College	4	0.3%	2 Year Public	--
Mansfield University PA	4	0.3%	4 Year Private	PA
Out-of-State Generic Colleges	4	0.3%		--
St Josephs University	4	0.3%	4 Year Private	PA
Towson University	4	0.3%	4 Year Private	MD
University of Scranton	4	0.3%	4 Year Public	PA

First Time, Full Time, First Year Student Enrollment by Pennsylvania County: Fall 2016

Top 10 Counties* with Most Enrollments Ranked

County	Total	Percent	Rank
Adams	14	0.68%	
Allegheny	3	0.15%	
Armstrong	1	0.05%	
Beaver	1	0.05%	
Bedford	0	0.00%	
Berks	84	4.07%	6
Blair	2	0.10%	
Bradford	3	0.15%	
Bucks	236	11.45%	4
Butler	2	0.10%	
Cambria	0	0.00%	
Cameron	0	0.00%	
Carbon	3	0.15%	
Centre	3	0.15%	
Chester	418	20.27%	1
Clarion	0	0.00%	
Clearfield	1	0.05%	
Clinton	0	0.00%	
Columbia	3	0.15%	
Crawford	0	0.00%	
Cumberland	59	2.86%	7
Dauphin	49	2.38%	10
Delaware	309	14.99%	3

County	Total	Percent	Rank
Elk	0	0.00%	
Erie	0	0.00%	
Fayette	1	0.05%	
Franklin	6	0.29%	
Fulton	0	0.00%	
Greene	0	0.00%	
Huntingdon	1	0.05%	
Indiana	0	0.00%	
Jefferson	0	0.00%	
Juniata	0	0.00%	
Lackawanna	47	2.28%	
Lancaster	53	2.57%	8
Lawrence	0	0.00%	
Lebanon	12	0.58%	
Lehigh	48	2.33%	
Luzern	17	0.82%	
Lycoming	1	0.05%	
McKean	0	0.00%	
Mercer	0	0.00%	
Mifflin	0	0.00%	
Monroe	25	1.21%	
Montgomery	311	15.08%	2
Montour	1	0.05%	

County	Total	Percent	Rank
Northampton	44	2.13%	
Northumberland	6	0.29%	
Perry	5	0.24%	
Philadelphia	203	9.84%	5
Pike	6	0.29%	
Potter	0	0.00%	
Schuylkill	16	0.78%	
Snyder	1	0.05%	
Somerset	0	0.00%	
Sullivan	0	0.00%	
Susquehanna	7	0.34%	
Tioga	0	0.00%	
Union	1	0.05%	
Venango	0	0.00%	
Warren	0	0.00%	
Washington	1	0.05%	
Wayne	6	0.29%	
Westmoreland	0	0.00%	
Wyoming	3	0.15%	
York	51	2.47%	9
Out of State	0	0.00%	
Out of Country	0	0.00%	
Total	2,062	100.00%	

*County at the time of admission.

First Time, Full Time, First Year Student Enrollment by State: Fall 2016

Top 10 States* with Most Enrollments Ranked

State	Total	Percent	Rank
Alabama	0	0.00%	
Alaska	0	0.00%	
Arizona	0	0.00%	
Arkansas	0	0.00%	
California	2	0.08%	7(t)
Colorado	0	0.00%	
Connecticut	1	0.04%	8(t)
Delaware	44	1.80%	3
District of Columbia	0	0.00%	
Florida	2	0.08%	7(t)
Georgia	0	0.00%	
Hawaii	0	0.00%	
Idaho	0	0.00%	
Illinois	0	0.00%	
Indiana	0	0.00%	
Iowa	0	0.00%	
Kansas	0	0.00%	
Kentucky	0	0.00%	
Louisiana	0	0.00%	
Maine	0	0.00%	
Maryland	17	0.70%	4
Massachusetts	1	0.04%	8(t)
Michigan	0	0.00%	
Minnesota	0	0.00%	
Mississippi	0	0.00%	
Missouri	0	0.00%	
Montana	0	0.00%	

State	Total	Percent	Rank
Nebraska	0	0.00%	
Nevada	0	0.00%	
New Hampshire	1	0.04%	8(t)
New Jersey	287	11.76%	2
New Mexico	0	0.00%	
New York	15	0.61%	5
North Carolina	0	0.00%	
North Dakota	0	0.00%	
Ohio	1	0.04%	8(t)
Oklahoma	0	0.00%	
Oregon	0	0.00%	
Pennsylvania	2,062	84.47%	1
Rhode Island	0	0.00%	
South Carolina	0	0.00%	
South Dakota	0	0.00%	
Tennessee	0	0.00%	
Texas	0	0.00%	
Utah	0	0.00%	
Vermont	1	0.04%	8(t)
Virginia	2	0.08%	7(t)
Washington	0	0.00%	
West Virginia	0	0.00%	
Wisconsin	1	0.04%	8(t)
Wyoming	0	0.00%	
Armed Forces	0	0.00%	
International	4	0.16%	6
Total	2,441	100.00%	

*State at the time of admission.

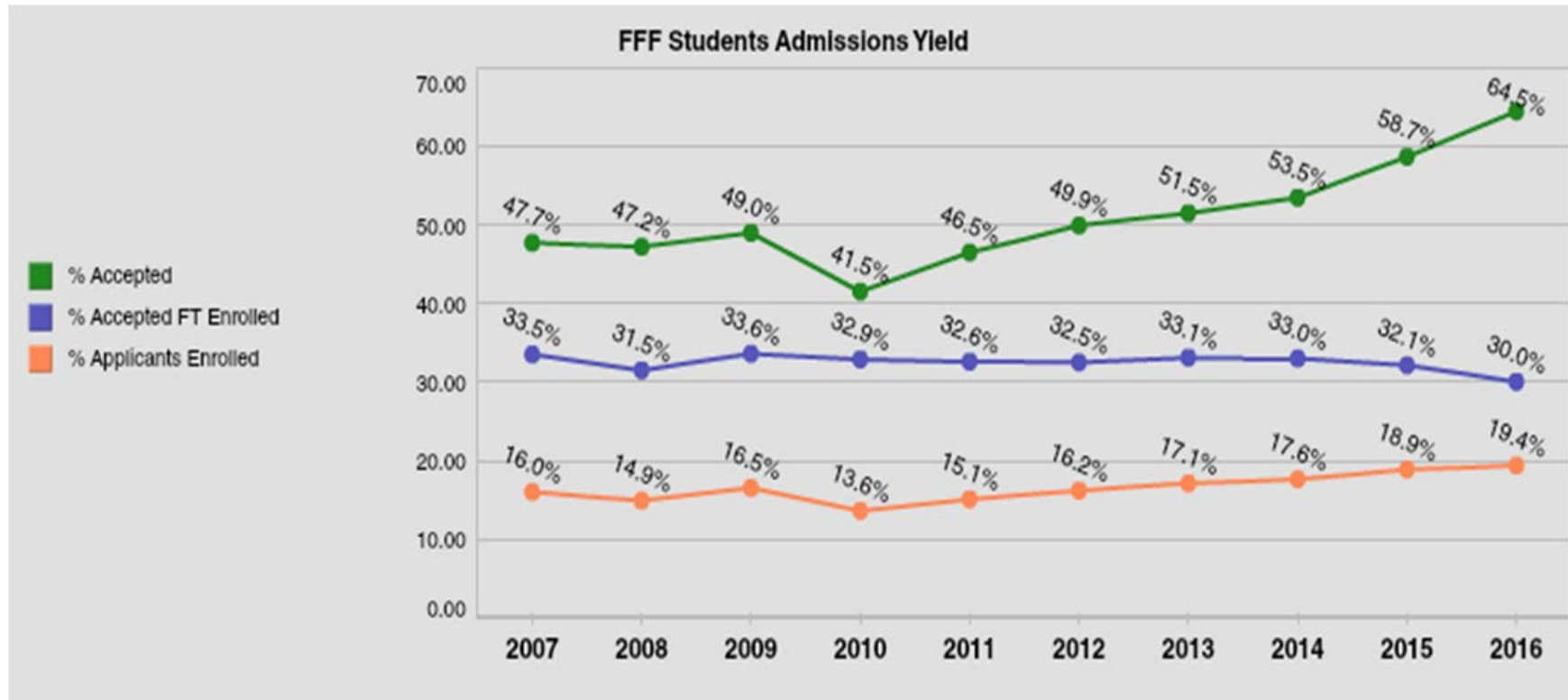
Admission Yield Statistics: Fall 2016

First-Time, Full Time, First Year Student Admission Yield

Year	# of Applicants	# Accepted	% Accepted	# Full-Time Enrolled	% Accepted Full-Time	% of Applicants
2007	12,237	5,834	47.7	1,957	33.5	16.0
2008	13,353	6,317	47.2	1,993	31.5	14.9
2009	13,615	6,667	49.0	2,241	33.6	16.5
2010	15,123	6,268	41.5	2,062	32.9	13.6
2011	15,080	7,013	46.5	2,283	32.6	15.1
2012	14,356	7,161	49.9	2,326	32.5	16.2
2013*	13,438	6,922	51.5	2,292	33.1	17.1
2014*	13,291	7,108	53.5	2,344	33.0	17.6
2015*	12,624	7,408	58.7	2,381	32.1	18.9
2016*	12,609	8,127	64.5	2,441	30.0	19.4
5-YR Change	-16.4%	15.9%		6.9%		
1-YR Change	-0.1%	9.7%		2.5%		
5-YR Difference			17.95		-2.56	4.26
1-YR Difference			5.78		-2.11	0.50

*Starting Fall 2013, number of applicants includes completed applications only.

First Time, Full-Time, First Year Admission Yield : Fall 2016



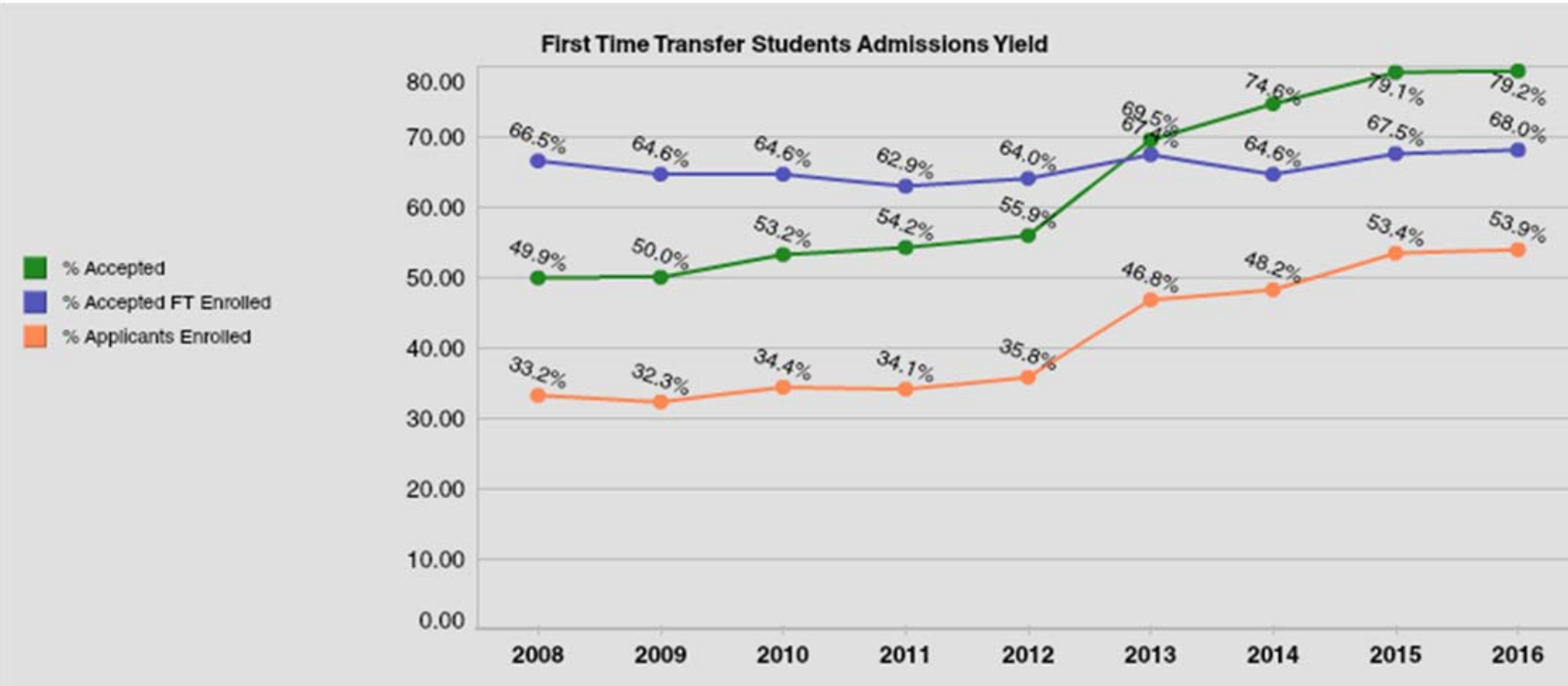
*Starting Fall 2013, number of applicants includes completed applications only.

First Time Transfer Admission Yield : Fall 2016

Year	# of Applicants	# Accepted	% Accepted	# Enrolled	% of Accepted Enrolled	% of Applicants Enrolled
2008	3,224	1,609	49.9	1,070	66.5	33.2
2009	3,639	1,821	50.0	1,176	64.6	32.3
2010	3,607	1,920	53.2	1,241	64.6	34.4
2011	3,742	2,029	54.2	1,276	62.9	34.1
2012	3,678	2,057	55.9	1,316	64	35.8
2013*	2,883	2,003	69.5	1,350	67.9	46.8
2014*	2,762	2,061	74.6	1,331	64.6	48.2
2015*	2,649	2,095	79.1	1,415	67.5	53.4
2016*	2,703	2,142	79.2	1,457	68.0	53.9
5-YR Change	-27.8%	5.6%		14.2%		
1-YR Change	2.0%	2.2%		3.0%		
5-YR Difference			25.05		5.12	19.80
1-YR Difference			0.16		0.48	0.49

Starting Fall 2013, number of applicants includes completed applications only.

First Time Transfer Admission Yield : Fall 2016



Starting Fall 2013, number of applicants includes completed applications only.



ENROLLMENT

Head Count Enrollment by Gender and Race/Ethnicity: Fall 2016

Gender	Undergraduate		Graduate		Total*
	Full-Time	Part-time	Full-Time	Part-time	
Male	5,149	713	235	548	6,645
Female	7,675	865	654	1,171	10,365
Total	12,824	1,578	889	1,719	17,010

Ethnicity	Undergraduate		Graduate		Total*
	Full-Time	Part-time	Full-Time	Part-time	
African American	1,354	263	172	204	1,993
Native American	10	4	1	0	15
Asian	270	58	12	47	387
Caucasian	9,913	1,110	603	1,360	12,986
Hawaiian/Pacific Islander	13	3	0	2	18
Hispanic	712	79	43	42	876
Non-Resident Alien	66	1	34	28	129
Multiracial	409	30	22	18	479
Not Supplied	77	30	2	18	127
Total	12,824	1,578	889	1,719	17,010

*These headcounts are unduplicated counts by primary major within student's career level and do not reflect IPEDS unduplicated headcount.

Head Count Enrollment by Degree Status and College: Fall 2016

Degree Status	Undergraduate		Graduate		Total*
	Full-Time	Part-time	Full-Time	Part-time	
Degree Seeking	11,376	1,278	851	1,422	14,927
Non-degree Seeking	1,448	300	38	297	2,083
Total	12,824	1,578	889	1,719	17,010

College	Undergraduate		Graduate		Total*
	Full-Time	Part-time	Full-Time	Part-time	
Arts & Humanities	1,731	142	78	168	2,119
Business and Public Management	3,333	322	133	416	4,204
Education & Social Work	1,161	122	355	607	2,245
Health Sciences	2,286	358	205	239	3,088
Science & Mathematics	2,645	276	116	188	3,225
Interdisciplinary & Graduate Studies	1,668	358	2	101	2,129
Total	12,824	1,578	889	1,719	17,010

*These headcounts are unduplicated counts by primary major within student's career level and do not reflect IPEDS unduplicated headcount.

**Interdisciplinary & Graduate Studies include non-degree and undeclared major students.

Enrollment by State at the Time of Admission: Fall 2013 to Fall 2016

State	Fall 2013			Fall 2014			Fall 2015			Fall 2016		
	UG	G	Total	UG	G	Total	UG	G	Total	UG	G	Total
Alabama	0	0	0	0	0	0	0	0	0	1	1	2
Alaska	1	0	1	1	0	1	1	0	1	1	0	1
Arizona	0	0	0	0	1	1	1	1	2	1	1	2
Arkansas	0	1	1	0	1	1	0	0	0	0	0	0
California	14	1	15	9	4	13	9	4	13	9	8	17
Colorado	2	1	3	0	1	1	0	0	0	0	0	0
Connecticut	15	0	15	15	0	15	6	1	7	6	1	7
Delaware	170	51	221	152	50	202	171	44	215	168	47	215
Florida	7	3	10	7	1	8	4	3	7	6	4	10
Georgia	3	1	4	2	0	2	1	0	1	0	1	1
Hawaii	1	1	2	2	0	2	2	0	2	2	0	2
Idaho	0	0	0	0	1	1	0	1	1	0	0	0
Illinois	0	0	0	0	0	0	0	0	0	0	1	1
Indiana	1	1	2	0	0	0	0	1	1	0	0	0
Iowa	2	1	3	1	1	2	2	0	2	1	0	1
Kentucky	0	0	0	0	0	0	0	1	1	0	2	2
Louisiana	0	1	1	0	1	1	1	1	2	1	0	1
Maine	2	0	2	1	1	2	1	1	2	1	1	2
Maryland	74	9	83	80	13	93	81	14	95	87	20	107
Massachusetts	5	4	9	4	5	9	4	4	8	4	2	6
Michigan	2	3	5	4	1	5	4	0	4	3	1	4
Minnesota	0	0	0	1	0	1	1	1	2	0	3	3
Missouri	0	1	1	0	1	1	0	0	0	0	1	1
Nevada	0	0	0	1	0	1	1	1	2	1	0	1
New Hampshire	2	0	2	2	1	3	2	1	3	2	0	2
New Jersey	1,389	67	1,456	1,343	61	1,404	1,355	60	1,415	1,273	74	1,347
New Mexico	0	0	0	0	0	0	1	0	1	1	1	2
New York	56	11	67	60	8	68	59	9	68	60	14	74
North Carolina	2	1	3	4	4	8	3	5	8	1	7	8
North Dakota	0	0	0	0	0	0	1	0	1	1	0	1

to be continued.....

Enrollment by State at the Time of Admission: Fall 2013 to Fall 2016 (continued)

STATE	Fall 2013			Fall 2014			Fall 2015			Fall 2016		
	UG	G	Total	UG	G	Total	UG	G	Total	UG	G	Total
Ohio	4	4	8	1	2	3	1	0	1	2	6	8
Oklahoma	0	0	0	0	0	0	0	0	0	0	0	0
Oregon	1	0	1	1	1	2	0	1	1	0	0	0
Pennsylvania	11,880	1,879	13,759	12,075	1,974	14,049	12,422	2,137	14,559	12,691	2,348	15,039
Rhode Island	0	1	1	0	1	1	1	0	1	1	0	1
South Carolina	2	1	3	2	1	3	1	1	2	2	2	4
Tennessee	1	0	1	1	0	1	0	0	0	0	0	0
Texas	4	0	4	2	0	2	3	2	5	4	9	13
Vermont	0	0	0	0	0	0	0	0	0	1	0	1
Virginia	17	5	22	16	5	21	16	8	24	16	9	25
Washington	2	0	2	0	0	0	0	0	0	0	2	2
Washington D.C.	1	1	2	1	2	3	1	2	3	1	1	2
West Virginia	1	1	2	1	0	1	1	0	1	1	0	1
Wisconsin	0	1	1	1	2	3	0	2	2	1	1	2
Armed Forces	2	0	2	1	0	1	0	0	0	0	1	1
International	50	83	133	58	97	155	69	79	148	52	37	89
Other	0	0	0	0	1	1	0	0	0	0	0	0
TOTAL	13,713	2,134	15,847	13,849	2,242	16,091	14,226	2,385	16,611	14,402	2,608	17,010
In-State	11,880	1,879	13,759	12,075	1,974	14,049	12,422	2,137	14,559	12,691	2,348	15,039
Out-of-State	1,833	255	2,088	1,774	268	2,042	1,804	248	2,052	1,711	260	1,971
Out-of-State %	13.37%	11.95%	13.18%	12.81%	11.95%	12.69%	12.68%	10.40%	12.35%	11.88%	9.97%	12%

Enrollment by County for Pennsylvania Residents: Fall 2016

Top 10 Counties* With Most Enrollments Ranked

County	Total	Percent	Rank
Adams	56	0.38%	
Allegheny	43	0.30%	
Armstrong	1	0.01%	
Beaver	6	0.04%	
Bedford	0	0.00%	
Berks	466	3.20%	7
Blair	6	0.04%	
Bradford	5	0.03%	
Bucks	1,436	9.86%	5
Butler	9	0.06%	
Cambria	3	0.02%	
Cameron	0	0.00%	
Carbon	24	0.16%	
Centre	16	0.11%	
Chester	3,929	26.99%	1
Clarion	3	0.02%	
Clearfield	4	0.03%	
Clinton	2	0.01%	
Columbia	20	0.14%	
Crawford	3	0.02%	
Cumberland	237	1.63%	
Dauphin	236	1.62%	
Delaware	2,654	18.23%	2
Elk	0	0.00%	

County	Total	Percent	Rank
Erie	4	0.03%	
Fayette	1	0.01%	
Franklin	31	0.21%	
Fulton	1	0.01%	
Greene	1	0.01%	
Huntingdon	3	0.02%	
Indiana	0	0.00%	
Jefferson	0	0.00%	
Juniata	5	0.03%	
Lackawanna	193	1.33%	
Lancaster	468	3.21%	6
Lawrence	1	0.01%	
Lebanon	65	0.45%	
Lehigh	312	2.14%	8
Luzerne	132	0.91%	
Lycoming	18	0.12%	
McKean	2	0.01%	
Mercer	1	0.01%	
Mifflin	2	0.01%	
Monroe	104	0.71%	
Montgomery	2,120	14.56%	3
Montour	2	0.01%	
Northampton	294	2.02%	10
Northumberland	24	0.16%	

County	Total	Percent	Rank
Perry	14	0.10%	
Philadelphia	1,549	10.64%	4
Pike	43	0.30%	
Potter	1	0.01%	
Schuylkill	89	0.61%	
Snyder	6	0.04%	
Somerset	1	0.01%	
Sullivan	1	0.01%	
Susquehanna	19	0.13%	
Tioga	7	0.05%	
Union	6	0.04%	
Venango	0	0.00%	
Warren	1	0.01%	
Washington	6	0.04%	
Wayne	27	0.19%	
Westmoreland	7	0.05%	
Wyoming	16	0.11%	
York	301	2.07%	9
Total	15,039	100.00%	

*County at the time of admission.

Head Count Enrollment: Fall 2012 to 2016
Five-Year Enrollment by Ethnicity and Gender

Undergraduate Students

Ethnicity	2012		2013		2014		2015		2016	
	Male	Female	Male	Female	Male	Female	Male	Female	Male	Female
White	4,480	6,434	4,492	6,646	4,460	6,572	4,523	6,549	4,535	6,488
African American	415	730	494	754	493	857	576	914	595	1022
Hispanic	245	369	267	369	286	404	314	448	345	446
Asian	121	132	124	168	118	176	119	187	126	202
Hawaiian/Pacific Islander	2	5	3	5	2	12	7	10	8	8
Native American	6	13	5	10	3	11	1	13	2	12
NRA-International	19	29	17	24	20	21	25	43	24	43
Multiracial	100	126	134	188	145	218	167	242	176	263
Not Supplied	37	38	7	6	24	27	36	52	51	56
Total	5,425	7,876	5,543	8,170	5,551	8,298	5,768	8,458	5,862	8,540

Graduate Students

Ethnicity	2012		2013		2014		2015		2016	
	Male	Female	Male	Female	Male	Female	Male	Female	Male	Female
White	485	1,149	509	1,133	539	1,142	511	1,285	597	1,366
African American	77	159	79	177	86	209	86	233	102	274
Hispanic	18	39	17	47	18	49	20	56	21	64
Asian	24	33	18	39	18	44	15	47	21	38
Hawaiian/Pacific Islander		1	1		3				1	1
Native American		4	1	4	1	3		2	0	1
NRA-International	14	39	25	38	39	46	34	50	25	37
Multiracial	6	14	10	18	13	19	9	28	8	32
Not Supplied	22	30	7	11	4	9	4	5	8	12
Total	646	1,468	667	1,467	721	1,521	679	1,706	783	1,825

Head Count Enrollment: Fall 2012 to 2016 Enrollment by College

Undergraduate Students

College	2012	2013	2014	2015	2016
Arts & Humanities	2,258	2,148	2,032	1,954	1,873
Business and Public Managem	2,078	2,288	2,910	3,362	3,655
Education & Social Work	1,421	1,367	1,301	1,233	1,283
Health Sciences	2,348	2,481	2,572	2,633	2,644
Science & Mathematics	2627	2759	2773	2917	2,921
Interdis & Grad Studies	2,569	2,670	2,261	2,127	2,026
Total	12,834	13,301	13,713	14,226	14,402

Graduate Students

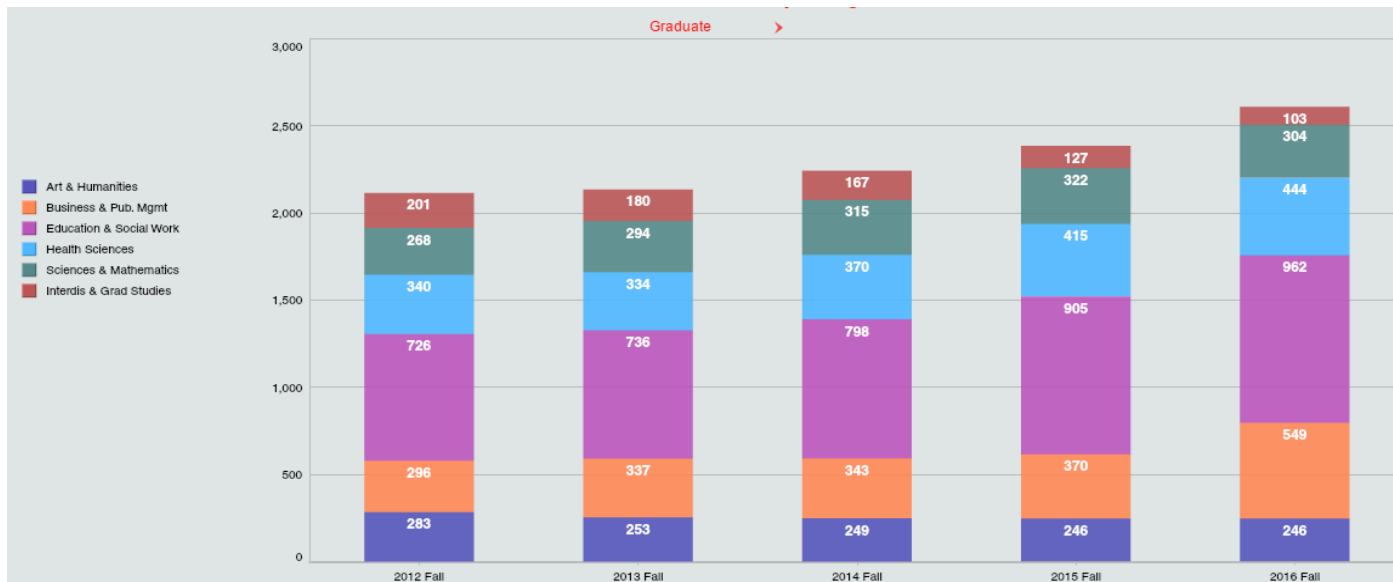
College	2012	2013	2014	2015	2016
Arts & Humanities	283	253	249	246	246
Business and Public Managem	296	337	343	370	549
Education & Social Work	726	736	798	905	962
Health Sciences	340	334	370	415	444
Science & Mathematics	268	294	315	322	304
Interdis & Grad Studies	201	180	167	127	103
Total	2,266	2,114	2,134	2,385	2,608

* Interdisciplinary & Graduate Studies include non-degree and undeclared major students.

Head Count Enrollment: Fall 2012 to 2016 Enrollment by College : Five Falls



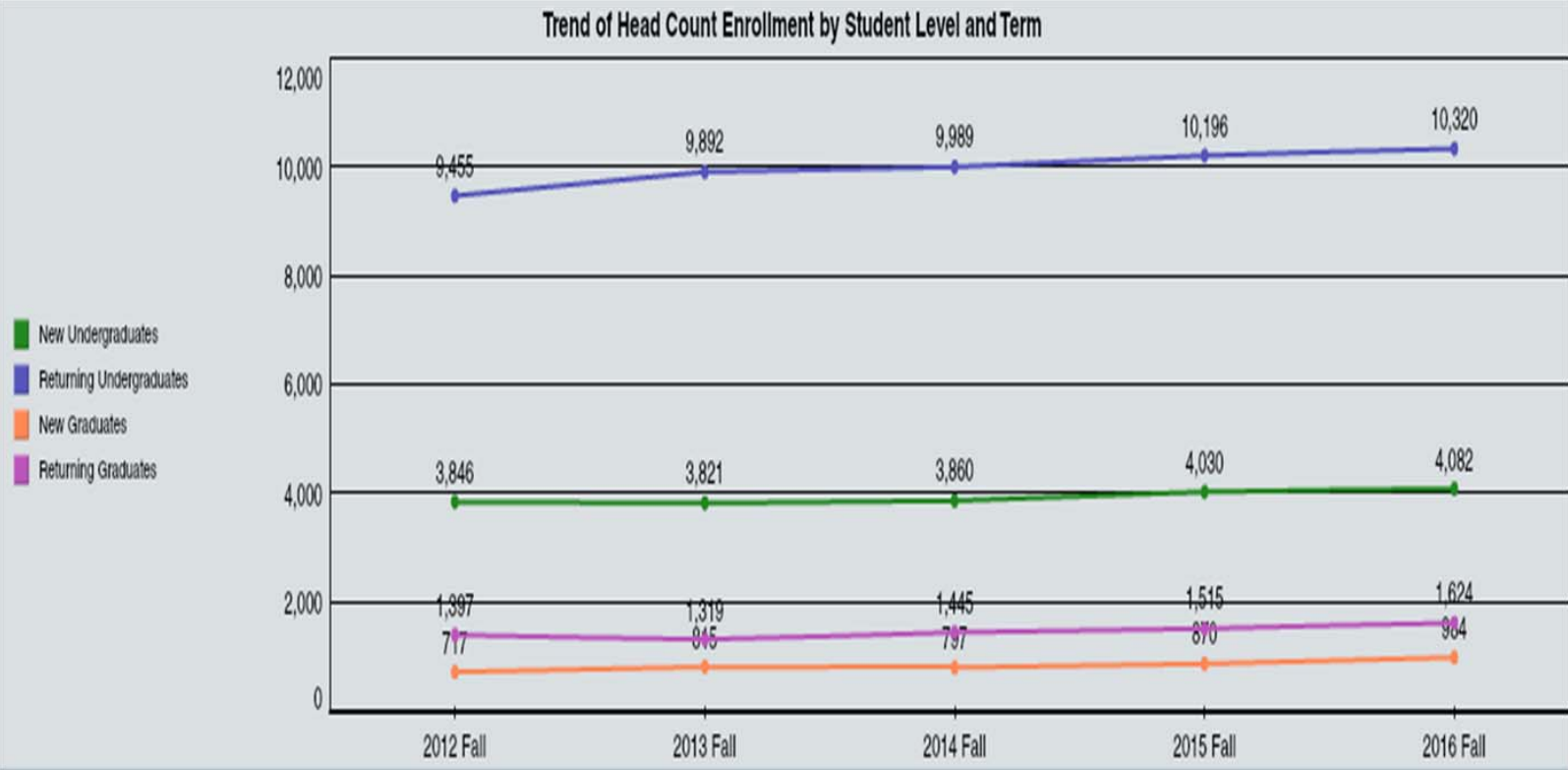
Note: Non-degree and undeclared major students are included in Interdisciplinary & Graduate Studies.



Head Count Enrollment by Student Level: Fall 2011 to Fall 2016

Fall Semester	2011	2012	2013	2014	2015	2016	One Year Difference
Undergraduate							
New First Year Degree Seeking	2,292	2,334	2,298	2,351	2,395	2,454	59
New Transfer Degree Seeking	1,276	1,316	1,350	1,331	1,415	1,457	42
New Readmits Degree Seeking	104	98	76	107	100	56	-44
New Undergraduate Non Degree	139	98	97	71	120	115	-5
Returning Undergraduate Degree Seeking First Year	565	604	657	555	596	573	-23
Returning Undergraduate Degree Seeking Sophomore	2,414	2,432	2,585	2,650	2,617	2,671	54
Returning Undergraduate Degree Seeking Junior	2,670	2,746	2,912	2,969	3,090	3,053	-37
Returning Undergraduate Degree Seeking Senior	3,200	3,525	3,579	3,650	3,747	3,860	113
Returning Undergraduate Non Degree	174	148	159	165	146	163	17
Graduate							
New Masters	557	533	621	612	686	770	84
New Doctorate	-	-	-	17	38	74	36
New Graduate Non Degree	209	184	194	168	146	140	-6
Returning Masters	1,189	1,163	1,132	1,211	1,287	1,357	70
Returning Doctorate	-	-	-	15	40	72	32
Returning Graduate Non Degree	311	234	187	219	188	195	7
Total Enrollment	15,100	15,415	15,847	16,091	16,611	17,010	399

Headcount Enrollment by Student Level Fall 2012-2016



Credit Hours and Student FTE Enrollment FY 2011-12 to FY 2015-16

Student FTE Enrollment: FY 2011-12 to FY 2015-16

FTE Division	2011-12	2012-13	2013-14	2014-15	2015-16	One Year Difference
Lower Division Full-Time Equivalent Students	7,830.1	8,070.5	8,184.6	8,277.9	8,458.20	180.3
Upper Division Full-Time Equivalent Students	4,762.4	5,066.5	5,179.0	5,283.4	5,356.9	73.5
Graduate Division Full-Time Equivalent Students	1,466.0	1,405.7	1,466.8	1,566.9	1,620.0	53.1
Total Full-Time Equivalent Students	14,058.5	14,542.7	14,830.4	15,128.2	15,435.1	306.9

Credit Hours: FY 2011-12 to FY 2015-16

College	2011-12	2012-13	2013-14	2014-15	2015-16	One Year Difference
Arts & Humanities	129,608.0	133,903.5	130,937.0	130,570.0	130,834.5	264.5
Business and Public Management	50,381.0	56,813.0	62,116.0	68,073.0	75,654.0	7,581.0
*Interdisciplinary & Graduate Studies	2,722.0	3,148.5	3,047.0	3,440.0	3,042.0	-398.0
Education & Social Work	50,128.0	47,561.0	47,078.0	47,066.0	46,451.0	-615.0
Health Sciences	59,061.5	60,464.5	64,313.0	66,164.0	67,461.0	1,297.0
Science & Mathematics	121,058.0	125,957.0	128,618.0	129,152.0	129,891.0	739.0
Total University Credit Hours	412,957.5	427,847.5	436,109.0	444,444.0	453,333.5	8,868.5

*Interdisciplinary & Graduate Studies include non-degree and undeclared major students.

Credit Hours by College and Course division For FY 2015-16

College	Lower	Upper	Total Undergraduate	Graduate	Total	% Graduate
Arts & Humanities	94,701.5	32,371.0	127,072.5	3,762.0	130,834.5	2.9%
Business and Public Management	28,467.0	40,974.0	69,441.0	6,213.0	75,654.0	8.2%
Education & Social Work	8,092.0	22,792.0	30,884.0	15,567.0	46,451.0	33.5%
Health Sciences	25,955.5	33,307.5	59,263.0	8,198.0	67,461.0	12.2%
Science & Mathematics	95,261.0	29,506.0	124,767.0	5,124.0	129,891.0	3.9%
*School of Interdisciplinary & Graduate Studies	1,270.0	1,757.0	3,027.0	15.0	3,042.0	0.5%
Total University Credit Hours	253,747.0	160,707.5	414,454.5	38,879.0	453,333.5	8.6%

*School of Interdisciplinary & Graduate Studies include non-degree and undeclared students.



RETENTION AND GRADUATION

Retention and Graduation Rates for First-time, Full-Time, First-Year, Degree-Seeking Student Cohorts --University Summary

Fall Cohort	N 1st Fall	2nd Fall		3rd Fall		4th Fall		5th Fall				6th Fall				7th Fall			
		Cohort Retained		Cohort Retained		Cohort Retained		Cumulative Graduated within 4 yrs*		Cohort Retained		Cumulative Graduated within 5 yrs		Cohort Retained		Cumulative Graduated within 6 yrs		Cohort Retained	
		n	% 1F	n	% 1F	n	% 1F	n	% 1F	n	% 1F	n	% 1F	n	% 1F	n	% 1F	n	% 1F
2003	1723	1466	85.1	1298	75.3	1207	70.1	685	39.8	481	27.9	1056	61.3	89	5.2	1125	65.3	21	1.2
2004	1870	1570	84.0	1361	72.8	1306	69.8	736	39.4	535	28.6	1160	62.0	95	5.1	1228	65.7	29	1.6
2005	1898	1607	84.7	1442	76.0	1378	72.6	817	43.0	528	27.8	1243	65.5	81	4.3	1303	68.7	26	1.4
2006	1883	1616	85.8	1467	77.9	1401	74.4	803	42.6	553	29.4	1233	65.5	93	4.9	1298	68.9	26	1.4
2007	1955	1650	84.4	1511	77.3	1428	73.0	857	43.8	536	27.4	1266	64.8	96	4.9	1346	68.8	27	1.4
2008	1992	1683	84.5	1517	76.2	1453	72.9	872	43.8	525	26.4	1271	63.8	108	5.4	1340	67.3	35	1.8
2009	2241	1909	85.2	1747	78.0	1693	75.5	954	42.6	670	29.9	1502	67.0	113	5.0	1588	70.9	36	1.6
2010	2060	1773	86.1	1636	79.4	1568	76.1	947	46.0	555	26.9	1391	67.5	88	4.3	1444	70.1	31	1.5
2011	2281	1948	85.4	1820	79.8	1731	75.9	1110	48.7	593	26.0	1582	69.4	102	4.5				
2012	2325	2031	87.4	1881	80.9	1803	77.5	1168	50.2	596	25.6								
2013	2289	2011	87.9	1884	82.3	1803	78.8												
2014	2343	2059	87.9	1930	82.4														
2015	2380	2043	85.8																
2016	2441																		

Note: Data is from Fall enrollment at census dates and completions files as reported to IPEDS. Includes degree sweeps and IPEDS exclusions through 10/2016.

Second-Year Retention Rates for First-Time, Full-Time, Degree-Seeking First Year by Race/Ethnicity

Fall Cohort	African American			Asian			Latino			Native American			Caucasian		
	N 1 st Fall	N 2 nd Fall	% Retained	N 1 st Fall	N 2 nd Fall	% Retained	N 1 st Fall	N 2 nd Fall	% Retained	N 1 st Fall	N 2 nd Fall	% Retained	N 1 st Fall	N 2 nd Fall	% Retained
2009	177	151	85.3	39	34	87.2	85	64	75.3	6	6	100.0	1908	1631	85.5
2010	203	170	83.7	41	36	87.8	114	87	76.3	2	1	50.0	1643	1423	86.6
2011	191	154	80.6	30	26	86.7	163	133	81.6	1	1	100.0	1836	1585	86.3
2012	211	181	85.8	48	43	89.6	136	114	83.8	0	0	0.0	1880	1651	87.8
2013	231	193	83.5	48	44	91.7	121	101	83.5	1	1	100.0	1809	1603	88.6
2014	232	190	81.9	48	42	87.5	119	106	89.1	1	1	100.0	1842	1637	88.9
2015	251	214	85.3	38	33	86.8	159	127	79.9	1	1	100.0	1831	1591	86.9
2016	263			53			147			0			1843		

Note: Data is from Fall enrollment at census dates and completions files as reported to IPEDS. Includes degree sweeps and IPEDS exclusions through 10/2016.

Second-Year Retention Rates for First-Time, Full-Time, Degree-Seeking First Year by Gender

Fall Cohort	Male			Female		
	N 1 st Fall	N 2 nd Fall	% Retained	N 1 st Fall	N 2 nd Fall	% Retained
2009	888	745	83.9	1353	1164	86.0
2010	765	641	83.8	1295	1132	87.4
2011	903	753	83.4	1378	1196	86.7
2012	868	763	87.9	1457	1268	87.0
2013	807	684	84.8	1482	1327	89.5
2014	891	789	88.6	1452	1270	87.5
2015	888	746	84.0	1492	1297	86.9
2016	944			1497		

Note: Data is from Fall enrollment at census dates and completions files as reported to IPEDS. Includes degree sweeps and IPEDS exclusions through 10/2016.

Four Year Graduation Rates for First-Time, Full-Time First Year by Race/Ethnicity

Fall Cohort	African American			Asian			Latino			Native American			Caucasian		
	N 1st Fall	N Graduated within 4 years	% Graduated within 4 years	N 1st Fall	N Graduated within 4 years	% Graduated within 4 years	N 1st Fall	N Graduated within 4 years	% Graduated within 4 years	N 1st Fall	N Graduated within 4 years	% Graduated within 4 years	N 1st Fall	N Graduated within 4 years	% Graduated within 4 years
2007	190	45	23.7	39	18	46.2	61	14	23.0	9	4	44.4	1655	776	46.9
2008	201	38	18.9	43	20	46.5	90	33	36.7	5	2	40.0	1647	777	47.2
2009	177	29	16.4	39	11	28.2	85	20	23.5	6	1	16.7	1908	881	46.2
2010	203	44	21.7	41	16	39.0	114	34	29.8	2	1	50.0	1643	826	50.3
2011	191	50	26.2	30	15	50.0	163	56	34.4	1	1	100.0	1836	962	52.4
2012	211	53	25.1	48	26	54.2	136	52	38.2	0	0	0.0	1880	1016	54.0

Note: Data is from Fall enrollment at census dates and completions files as reported to IPEDS. Includes degree sweeps and IPEDS exclusions through 10/2016.

Six Year Graduation Rates for First-Time, Full-Time First Year by Race/Ethnicity

Fall Cohort	African American			Asian			Latino			Native American			Caucasian		
	N 1st Fall	N Graduated within 6 years	% Graduated within 6 years	N 1st Fall	N Graduated within 6 years	% Graduated within 6 years	N 1st Fall	N Graduated within 6 years	% Graduated within 6 years	N 1st Fall	N Graduated within 6 years	% Graduated within 6 years	N 1st Fall	N Graduated within 6 years	% Graduated within 6 years
2005	170	98	57.6	38	25	65.8	66	40	60.6	3	1	33.3	1618	1139	70.4
2006	171	98	57.3	41	24	58.5	66	33	50.0	5	3	60.0	1596	1136	71.2
2007	190	98	51.6	39	28	71.8	61	32	52.5	9	7	77.8	1655	1181	71.4
2008	201	110	54.7	43	31	72.1	90	62	68.9	5	4	80.0	1647	1130	68.6
2009	177	86	48.6	39	26	66.7	85	45	52.9	6	4	66.7	1908	1411	74.0
2010	203	106	52.2	41	30	73.2	114	70	61.4	2	1	50.0	1643	1194	72.7

Note: Data is from Fall enrollment at census dates and completions files as reported to IPEDS. Includes degree sweeps and IPEDS exclusions through 10/2016.

Four Year Graduation Rates for First-Time, Full-Time First Year by Gender

Fall Cohort	Male			Female		
	N 1st Fall	Graduated within 4 years		N 1st Fall	Graduated within 4 years	
		#	%		#	%
2007	740	235	31.8	1215	622	51.2
2008	761	232	30.5	1231	640	52.0
2009	888	277	31.2	1353	677	50.0
2010	765	264	34.5	1295	683	52.7
2011	903	338	37.4	1378	772	56.0
2012	868	354	40.8	1457	814	55.9

Note: Data is from Fall enrollment at census dates and completions files as reported to IPEDS. Includes degree sweeps and IPEDS exclusions through 10/2016.

Six Year Graduation Rates for First-Time, Full-Time First Year by Gender

Fall Cohort	Male			Female		
	N 1st Fall	Graduated within 6 years		N 1st Fall	Graduated within 6 years	
		#	%		#	%
2005	679	420	61.9	1219	883	72.4
2006	683	401	58.7	1200	897	74.8
2007	740	455	61.5	1215	891	73.3
2008	761	463	60.8	1231	877	71.2
2009	888	581	65.4	1353	1007	74.4
2010	765	475	62.1	1295	969	74.8

Note: Data is from Fall enrollment at census dates and completions files as reported to IPEDS. Includes degree sweeps and IPEDS exclusions through 10/2016.

A large purple graphic element consisting of a thick L-shaped bar. The horizontal bar is at the top, and the vertical bar is on the right side. A white rectangular box with a thin black border is centered within the horizontal part of the purple bar.

ACADEMIC DEGREE AND CERTIFICATE PROGRAMS

Undergraduate Degree and Certificate Programs - Fall 2017

College of Arts and Humanities

BA Anthropology
BA Biology
BA Communication Studies
BA English: Literature
BA English: Writings
BA History
BA History: American Studies
BA Languages & Cultures: French
BA Languages & Cultures: German
BA Languages & Cultures: Russian
BA Languages & Cultures: Spanish
BA Latin
BA Liberal Studies: Arts and Sciences
BA Liberal Studies: Career Preparation
BA Literature
BA Mathematics
BA Philosophy
BA Philosophy: Religious Studies
BA Psychology
BA Sociology
BA: Theatre
BA Theatre: Design/Tech/Management
BA Theatre: Music Theatre
BA Theatre: Performance
BA Women's and Gender Studies
BFA Graphic & Inter. Design
BFA Studio Arts
BM Music: Performance Instr
BM Music: Performance Jazz
BM Music: Performance Keyboard
BM Music: Performance Voice
BM Music Educ: Instrument
BM Music Educ: Keyboard
BM Music Educ: Voice
BM Music: Elective Studies
BM Music: History
BM Music: Theory & Composition

College of Arts and Humanities (cont..)

BSED English: Literature
BSED English: Writings
Certificate TESL
Teaching Certification English
Teaching Certification French
Teaching Certification German
Teaching Certification Latin
Teaching Certification Russian
Teaching Certification Social Studies - History
Teaching Certification Spanish
Teaching Certification: Music Education

College of Business and Public Management

BA Geography
BA Geography: Environmental
BA Geography: Geographic Information Systems
BA Geography: Urban/Regional Planning
BA Political Science
BA Political Science: International Relations
BA Political Science: Applied Public Policy
BS Accounting
BS Business Management
BS Criminal Justice
BS Criminal Justice (Philadelphia)
BS Economics
BS Finance
BS Marketing
BS Pre-Business Accounting
BS Pre-Business: Eco-Finance
BS Pre-Business: Management
BS Pre-Business: Marketing
BS Urban & Environmental Plan
BSW Social Work
BSW Social Work (Philadelphia)
Pre-International Business
Teacher Education Social Studies - Geography Teacher Certification
Teacher Education Social Studies - Political Science Teacher Certification

College of Education and Social Work

BSED Early Childhood Education
BSED Early Grades Prep, PK-4 Education
BSED Elementary Education
BSED Middle Grades Prep, 4-8 Education
BSED Special Education: 7-12
BSED Special Education: PK-8
BSW Social Work
BSW Social Work (Philadelphia)
Teaching Certification Early Childhood Education
Certificate Education for Sustainability

Undergraduate Degree and Certificate Programs - Fall 2016 (continued)

College of Health sciences

BA Communicative Disorders
BS Athletic Training
BS Environmental Health
BS Exercise Science
BS Exercise Science: Pre-Chiropractic
BS Exercise Science: Pre-Occupational Therapy
BS Exercise Science: Pre-Physical Therapy
BS Health and Physical Education
BS Health Science: General
BS Health Science: Respiratory Care
BS Health Science: Sport Medicine Concentration
BS Health Science: Sport Medicine Concentration
BS Nutrition & Dietetics Accelerated
BS Nutrition and Dietetics
BS Pre-Chiropractic
BS Pre-Occupational Therapy
BS Pre-Physical Therapy
BS Public Health: Environmental
BS Public Health: Health Promotion
BSN Nursing
BSN Nursing: 2nd Degree
BSN Nursing: RN
BSN Nursing: RN (Philadelphia)
Certificate Athletic Training
Pre-Grad Program Certificate
Teaching Certification Health & Physical Education
Teaching Certification Speech Correction

School of Interdisciplinary and Graduate Studies

BA Liberal Studies: Arts & Science
BS Liberal Studies: Profession
BS Liberal Studies: Science/Math
Undeclared Business
Undeclared General
Undeclared Internal Transfer

College of Science and Mathematics

BA Anthropology
BA Mathematics
BA Mathematics Accel
BA Poli Science: Applied Public Policy
BA Polit Science : Int'l Relations
BA Psychology
BA Sociology
Biology: Marine Science
BS Biochemistry
BS Biology
BS Biology: Cell & Molecular
BS Biology: Ecology/Conserv
BS Biology: Marine Science
BS Biology: Medical Technology
BS Biology: Microbiology
BS Chemistry
BS Chemistry-Biology
BS Computational Math Accel
BS Computer Science
BS Foren & Toxicol Chemistry
BS Geoscience : Earth Systems
BS Geoscience: Geology
BS Industrial Math Accel
BS Mathematics: Actuarial Science
BS Mathematics: Computational
BS Mathematics: Finance
BS Mathematics: Industrial
BS Mathematics: Pure Mathematics
BS Mathematics: Statistics
BS Pharmaceutical Product Dev
BS Physics
BS Physics-Engineering
BS Pure Mathematics Accel
BSED Biology
BSED Chemistry
BSED Earth-Space Sci : Geology
BSED Earth-Space Science
BSED Mathematics
BSED Physics

College of Science & Mathematics (cont..)

Computer Security CERTIF
Mathematics: Pure Mathematics
Political Science Government and Politics
Teaching Certification Communications
Teaching Certification Biology
Teaching Certification Chemistry
Teaching Certification Earth-Space Science
Teaching Certification General Science
Teaching Certification Mathematics
Teaching Certification Physics
Teaching Education General Science
Teaching Education Social Studies-Political Science

Graduate Degree and Certificate Programs - Fall 2017

College of Arts and Humanities

Certificate Applied Statistics
 Certificate Business Ethics
 Certificate Computer Security
 Certificate Healthcare Ethics
 Certificate Holocaust and Genocide Studies
 Certificate Information Systems
 Certificate Kodaly Methodology
 Certificate Leadership for Women
 Certificate Music Technology
 Certificate Orff-Schulwerk
 Certificate Piano Pedagogy
 Certificate Publishing
 Certificate TESL
 Graduate Certificate Web Technology
 Letter of Completion: Clinical Mental Health
 MA Communication Studies
 MA Communication Studies (Philadelphia)
 MA English
 MA English - Non-Thesis Option
 MA French
 MA Geoscience
 MA History
 MA Holocaust and Genocide Studies
 MA Languages & Cultures in French
 MA Languages & Cultures in German
 MA Languages & Cultures in Spanish
 MA Mathematics
 MA Philosophy: Applied Ethics
 MA Philosophy: General
 MA Psychology - Clinical
 MA Psychology - General
 MA Psychology - Industrial/Organizational
 MA Spanish
 MA TESL
 MED French
 MED German
 MED History
 MED Spanish
 MM Music Education: Kodaly
 MM Music Education: Mus. Tech
 MM Music Education: Orff Schulwerk
 MM Music Education: Research
 MM Music Education: Performance
 MM Music Performance- Choral
 MM Music Performance- Instrument Cond

College of Arts and Humanities (cont.)

MM Music Performance- Organ
 MM Music Performance- Piano
 MM Music Performance- Vocal
 MM Music Performance
 MM Music Performance- Instrument
 MM Music: Piano Pedagogy
 MM Music: Theory & Composition
 Music Education: Technology
 Music: History and Literature
 MPA Leadership for Women
 MPA Long-Term Health Care
 MS Applied and Computational Math
 MS Applied Statistics
 MS Biology
 MS Biology : Thesis
 MS Computer Science
 MSA Leadership for Women
 MSA Long-Term Health Care
 Prof Growth Biology
 Prof Growth Chemistry
 Prof Growth Communications
 Prof Growth Computer Science
 Prof Growth English
 Prof Growth Foreign language French
 Prof Growth Foreign language Spanish
 Prof Growth History
 Prof Growth Liberal Studies
 Prof Growth Mathematics
 Prof Growth Philosophy
 Prof Growth Physical Science
 Prof Growth Psychology General
 Prof Growth TSEL
 Professional Growth Music: General
 Teaching Certification Biology
 Teaching Certification Chemistry
 Teaching Certification Earth-Space Science
 Teaching Certification English
 Teaching Certification French
 Teaching Certification General Science
 Teaching Certification German
 Teaching Certification Latin
 Teaching Certification Mathematics
 Teaching Certification Music Education
 Teaching Certification Physics
 Teaching Certification Social Studies - History

College of Arts and Humanities (cont..)

Teaching Certification Spanish

College of Business and Public Management

Certificate Administration
 Certificate Business
 Certificate Business (Philadelphia)
 Certificate in Business Analytics
 Entrepreneurship Certificate
 Certificate Geographic Information Systems
 Certificate Human Resource Management
 Certificate Non Profit Administration
 Certificate in Project Management
 Certificate Urban and Regional Planning
 Doctor of Public Administration
 MA Geography
 MBA Economics-Finance
 MBA Executive
 MBA General
 MBA Management
 MBA Technology - Electronic Commerce
 MPA Human Resource Management
 MPA Individualized Program
 MPA Nonprofit Administration
 MPA Public Administration
 MPA Regional Planning
 MPA Sport Mgt & Athletics
 MPA Training and Development
 MS Criminal Justice
 MS Criminal Justice (Philadelphia)
 MS Criminal Justice -Accelerate
 MSA Human Resource Management
 MSA Public Administration
 MSW Social Work
 MSW Social Work (Philadelphia)
 MSW Social Work Advanced Standing
 Prof Growth Criminal Justice
 Prof Growth Geography
 Prof Growth Government
 Prof Growth Political Science
 Prof Growth Social work

Graduate Degree and Certificate Programs - Fall 2016 (continued)

College of Education and Social Work

Certificate Autism
Certificate Education for Sustainability
Certificate Educational Technology
Certificate Entrepreneurial Education
Certificate Higher Ed Counseling/Student Affairs
Certificate Literacy
Certificate Literacy Coaching
Certificate of Advanced Graduate Professional Growth
Certificate Special Education
Certificate Universal Design Learning
Doctor of Education
Letter of Completion: Professional Counseling Licensure Prep
MED Applied Studies in Teaching and Learning
MED Applied Studies in Teaching and Learning (Philadelphia)
MED Applied Studies in Teaching and Learning (sprf)
MED Counseling - School
MED Early Childhood Education
MED Reading
MED Reading (Philadelphia)
MED Secondary Education
MED Special Education
MED Special Education (online)
MED Special Education (Philadelphia)
MS - Higher Education Counseling/Student Affairs
MS Clinical Mental Health Counseling
MSW Social Work
MSW Social Work Advanced Stand
MSW Social Work (Phila)
MSW Social Work , Adv St, Phila
Professional Growth Counselling
Professional Growth Elementary Education
Professional Growth Reading
Professional Growth Secondary Education
Professional Growth Social Work
Professional Growth Special Education
Reading MED at OJR School Dist
Teaching Certification Counseling
Teaching Certification Early Childhood Education
Teaching Certification Early Grades Preparation
Teaching Certification Elementary Education
Teaching Certification Middle Grades Preparation
Teaching Certification Post Baccalaureate Grades 4-8
Teaching Certification Post Baccalaureate PreK-4
Teaching Certification Reading
Teaching Certification Secondary Education

College of Education and Social Work (cont..)

Teaching Certification Special Education 7-12 (Online)
Teaching Certification Special Education 7-12 (Philadelphia)
Teaching Certification Special Education: 7-12
Teaching Certification Special Education: K-12
Teaching Certification Special Education: PK-8
Teaching Certification Special Education: PK-8 (Online)
Teaching Certification Special Education: PK-8 (Philadelphia)
Teaching Certification Reading (Philadelphia)

Teaching Certification Special Education 7-12 (Online)
Teaching Certification Special Education 7-12 (Philadelphia)
Teaching Certification Special Education: 7-12
Teaching Certification Special Education: K-12
Teaching Certification Special Education: PK-8
Teaching Certification Special Education: PK-8 (Online)
Teaching Certification Special Education: PK-8 (Philadelphia)
Teaching Certification Reading (Philadelphia)

College of Science and Mathematics

Certificate Web Technology
Certificate Applied Statistics
Certificate Computer Security
Certificate in Indust/Organiz Psych
Certificate Information Systems
Clinical Mental Health LOC
Doctorate of Psychology
MA Mathematics
MA Mathematics Accelerated
MA Psychology: Clinical
MA Psychology: General
MA Psychology: Industrial
MS Applied & Computational Math
MS Applied & Computational Math Accelerated
MS Applied Statistics
MS Biology
MS Biology : Thesis
MS Computer Science
MS Geoscience
Professional Growth Biology
Professional Growth Chemistry
Professional Growth Comp Sciences
Professional Growth Computer Science
Professional Growth Government
Professional Growth Mathematics

College of Science and Mathematics (cont..)

Professional Growth Physical Science
Professional Growth Political Science
Professional Growth Psychology: General
Teaching Certification Biology
Teaching Certification Chemistry
Teaching Certification Earth-Space Science
Teaching Certification General Science
Teaching Certification Mathematics
Teaching Certification Physics

Professional and Program Accreditations

West Chester University is accredited by
The Middle States Commission on Higher Education (MSCHE)

Accreditation Board for Engineering and Technology (ABET)
Accreditation Council for Continuing Medical Education (ACCME)
American Chemical Society (ACS)
American Council on the Teaching of Foreign Languages (ACTFL) - Recognized Programs
American Orff Schulwerk Association (AOSA)
American Speech-Language-Hearing Association (ASHA)
Association to Advance Collegiate Schools of Business (AACSB)
Association for Middle Level Education (AMLE) - Recognized Programs
Commission on Accreditation of Allied Health Education Programs (CAAHEP) - Pending Renewal
Commission on Accreditation of Athletic Training Education (CAATE)
Commission on Collegiate Nursing Education (CCNE)
Committee on Accreditation for Respiratory Care (CoARC)
Council on Education for Public Health (CEPH)
Council for Exceptional Children (CEC) - Recognized Programs
Council on Social Work Education (CSWE)
Commission on Accreditation of Dietetics Education (CADE)

Professional and Program Accreditations (Continued)

Council for Accreditation of Counseling and Related Educational Programs (CACREP)
Forensic Science Education Programs Accreditation Commission (FEPAC)
International Reading Association (IRA)- Recognized programs
National Association of Schools of Music (NASM)
National Association for Sport and Physical Education (NASPE)
National Association for the Education of Young Children (NAEYC) - Recognized Programs
National Association of Schools of Art and Design (NASAD)
National Association of Schools of Theatre (NAST)
National Council for the Accreditation of Teacher Education (NCATE)
National Council for the Social Studies (NCSS) - Recognized Programs
National Council of Teachers for Mathematics (NCTM) - Recognized Programs
National Council of Teachers of English (NCTE) - Recognized Programs
National Science Teachers Association (NSTA) - Recognized Programs
National Environmental Health Science and Protection Accreditation Council (EHAC)
Network of Schools of Public Policy, Affairs, and Administration (NASPAA)
Organization of American Kodaly Educators (OAKE)
Pennsylvania Department of Education (PDE)



DEGREES CONFERRED

The following counts include only Baccalaureate (Primary and Secondary Major) and Master's degrees.

College of Art & Humanities

School of Humanities

Communication Studies

	2011-12	2012-13	2013-14	2014-15	2015-16
Communication Studies BA	119	160	139	155	192
Communication Studies Undergraduate Total	119	160	139	155	192
Commun. Studies MA (Phila)					1
Communication Studies MA	7	11	9	10	7
Communication Studies Graduate Total	7	11	9	10	8
Communication Studies Total	126	171	148	165	200

English

English BA: Literature	25	24	30	33	20
English BA: Writings	36	43	47	63	48
English BSED: Literature	22	30	36	14	20
English BSED: Writings	8	10	18	10	9
English Undergraduate Total	91	107	131	120	97
English MA	28	24	38	25	13
English Graduate Total	28	24	38	25	13
English Total	119	131	169	145	110

Foreign Languages

BA Languages & Culture, French					1
BA Languages & Culture, Russia				1	1
BA Languages & Cultures, Span					2
French BA	6	9	8	7	5
German BA	2	10	3	7	6
Latin BA		1	2		
Russian BA	4	6	3	5	6
Spanish BA	21	28	22	19	13
Foreign Languages Undergraduate Total	33	54	38	39	34

Foreign Languages Continued...

	2011-12	2012-13	2013-14	2014-15	2015-16
French MA	6	5	2	5	1
French MED	1	2	2	2	2
Lang & Cultures MA, French					1
Lang & Cultures MA, Spanish					1
Spanish MA	3		3	3	2
Spanish MED	2	1	1		1
Foreign Languages Graduate Total	12	8	8	10	8
Foreign Languages Total	45	62	46	49	42

History

American Studies BA	4				
History BA	107	101	94	86	73
History: American Studies BA		1	1	1	
History Undergraduate Total	111	102	95	87	73
History MA	6	2	9	6	6
History Graduate Total	6	2	9	6	6
History Total	117	104	104	93	79

Holocaust and Genocide Studies

Holocaust & Genocide Studie MA	4	2	8	5	7
Holocaust and Genocide Graduate Total	4	2	8	5	7
Holocaust and Genocide Studies Total	4	2	8	5	7

Philosophy

Philosophy BA	10	14	20	10	13
Philosophy:Religious Studie BA	4	2	2	1	
Philosophy Undergraduate Total	14	16	22	11	13
Philosophy MA: Applied Ethics			1		1
Philosophy MA: General	3	5	6	5	2
Philosophy Graduate Total	3	5	7	5	3
Philosophy Total	17	21	29	16	16

Teach Eng as a Second Lang	2011-12	2012-13	2013-14	2014-15	2015-16
TESL MA	10	10	7	11	9
Teach Eng as a Second Language Graduate Total	10	10	7	11	9
Teach Eng as a Second Lang Total	10	10	7	11	9

Womens Studies

Women's and Gender Studies BA	11	7	12	5	17
Women Studies Undergraduate Total	11	7	12	5	17
Womens Studies Total	11	7	12	5	17
School of Humanities Undergraduate Total	379	446	437	417	426
School of Humanities Graduate Total	70	62	86	72	54
School of Humanities Total	449	508	523	489	480

School of Music

Applied Music

Music: Performance Instr BM	13	13	10	11	16
Music: Performance Jazz BM	3	2	1		1
Music: Performance Keyboard BM	1	2	5	1	1
Music: Performance Voice BM	4	7	5	3	4
Applied Music Undergraduate Total	21	24	21	15	22
Music Performance MM	10	8	15	15	11
Music: Piano Pedagogy MM	4		1		3
Applied Music Graduate Total	14	8	16	15	14
Applied Music Total	35	32	37	30	36

Music Education

Music Educ: Instrument BM	42	29	22	30	45
Music Educ: Keyboard BM	5	7	2	5	2
Music Educ: Voice BM	22	15	10	16	11
Music Education Undergraduate Total	69	51	34	51	58
Music Education MM: Research	1	1	3	6	4
Music Education MM:Performance	7	14	5	8	5

Music Education Continued...

	2011-12	2012-13	2013-14	2014-15	2015-16
Music Education: Technology	5	2	1	4	1
Music Education Graduate Total	13	17	9	18	10
Music Education Total	82	68	43	69	68

Music Theory, History and Comp

Music: Elective Studies BM	14	8	5	6	7
Music: Theory & Composition BM	1	7	4	5	1
Music, Theory, History and Comp Undergraduate Total	15	15	9	11	8
Music History MA		1			2
Music: History and Literature			1		
Music: Theory & Composition MM			1	4	2
Music, Theory, History and Comp Graduate Total		1	2	4	4
Music Theory, History and Comp Total	15	16	11	15	12
School of Music Undergraduate Total	105	90	64	77	88
School of Music Graduate Total	27	26	27	37	28
School of Music Total	132	116	91	114	116

School Visual and Performing Arts**Art & Design**

Graphic & Inter. Design BFA				30	30
Studio Arts BA		1	1		
Studio Arts BFA	35	47	48	26	23
Art & Design Undergraduate Total	35	48	49	56	53
Art & Design Total	35	48	49	56	53

Theatre Arts

Theatre and Dance: Dance BA	1	2	1	1	
Theatre: BA	6	3	4	7	4
Theatre: Design/Tech/Manag BA	1	3	4	2	3

Theatre Arts Continued...

	2011-12	2012-13	2013-14	2014-15	2015-16
Theatre: Mus Thtre BA	4	9	7	7	7
Theatre: Performance BA	6	4	8	4	3
Theatre Arts Undergraduate Total	18	21	24	21	17
Theatre Arts Total	18	21	24	21	17
School of Visual and Performaing Arts Undergraduate Total	53	69	73	77	70
School of Visual and Performaing Arts Graduate Total					
School Visual and Performing Arts Total	53	69	73	77	70
College of Arts and Humanities Undergraduate Total	537	605	574	571	584
College of Arts and Humanities Graduate Total	97	88	113	109	82
College of Art & Humanities Total	634	693	687	680	666

**College of Business & Public Management
No School: COBPM**

Criminal Justice

Criminal Justice BS	84	108	103	109	120
Criminal Justice BS (Phila)					1
Criminal Justice Undergraduate Total	84	108	103	109	121
Criminal Justice MS	20	18	16	19	15
Criminal Justice MS (Phila)				2	3
Criminal Justice Graduate Total	20	18	16	21	18
Criminal Justice Total	104	126	119	130	139

Geography & Planning

Geography BA	4	7	2	2	6
Geography: Environmental	3	4	3	4	3
Geography:GIS BA	4	4	8	2	1
Geography:Urban/Regional PI BA	5	2	6	2	12
Geography & Planning Undergraduate Total	16	17	19	10	22
Geography MA	14	9	12	14	8
Regional Planning MPA		1			
Geography & Planning Graduate Total	14	10	12	14	8
Geography & Planning Total	30	27	31	24	30

Public Policy and Administration

	2011-12	2012-13	2013-14	2014-15	2015-16
Human Resource Mgmt. MPA	4	8	9	9	15
Human Resource Mgmt. MSA	1	2		1	
Long-Term Hlth Care MSA		1			
Nonprofit Administration MPA	2	3	4	11	11
Public Administration MPA	25	37	40	30	32
Sport & Athletic Admin MSA		1			
Sport Mgt & Athletics MPA	1	1			
Training & Developmt MSA		1			
Public Policy and Administration Graduate Total	33	54	53	51	58
Public Policy and Administra. Total	33	54	53	51	58
No School: COBPM Undergraduate Total	100	125	122	119	143
No School: COBPM Graduate Total	67	82	81	86	84
No School: COBPM Total	167	207	203	205	227

School of Business

Accounting

Accounting BS	77	75	95	98	106
Accounting Undergraduate Total	77	75	95	98	106
Accounting Total	77	75	95	98	106

Economics

Economics BS	27	36	36	42	58
Finance BS	94	119	128	168	199
Economics Undergraduate Total	121	155	164	210	257
Economics Total	121	155	164	210	257

Management

Business Management BS	135	133	152	155	170
Management Undergraduate Total	135	133	152	155	170
Management Total	135	133	152	155	170

School of Business Continued...

	2011-12	2012-13	2013-14	2014-15	2015-16
Marketing					
Marketing BS	100	118	130	139	173
Marketing Undergraduate Total	100	118	130	139	173
Marketing Total	100	118	130	139	173
MBA Program					
Bus Admin: General MBA	28	24	22	40	41
MBA Program Graduate Total	28	24	22	40	41
MBA Program Total	28	24	22	40	41
School of Business Undergraduate Total	433	481	541	602	706
School of Business Graduate Total	28	24	22	40	41
School of Business Total	461	505	563	642	747
College of Business & Public Management Undergraduate Total	533	606	663	721	849
College of Business & Public Management Graduate Total	95	106	103	126	125
College of Business & Public Management Total	628	712	766	847	974

College of Education & Social Work

No School: COESW

Counselor Education

Couns: Higher Ed/Stu Aff MS	18	24	36	33	34
Counseling: Elementary MED	24	19	49	1	
Counseling: School MED				43	44
Counseling: Secondary MED	43	40	49	1	
Counselor Education Graduate Total	85	83	134	78	78
Counselor Education Total	85	83	134	78	78

Early and Middle Grades Ed.

Early Childhood Educ BSED	58	12			
Early Grades Prep, PK-4 BSED		146	225	243	180
Elementary Education BSED	300	35	1		

Early and Middle Grades Ed. Continued...

	2011-12	2012-13	2013-14	2014-15	2015-16
Middle Grades Prep, 4-8 BSED		26	82	62	44
Early and Middle Grades Ed. Undergraduate Total	358	219	308	305	224
App Stud Teach/Lear MED (sprf)					2
Applied Studies Teach/Lear MED	12	16	11	11	12
Early Childhood Education MED	21	1	17		10
Early and Middle Grades Ed. Graduate Total	33	17	28	11	24
Early and Middle Grades Ed. Total	391	236	336	316	248

No School: COESW cont..

Literacy

Reading MED	67	67	45	29	28
Literacy Graduate Total	67	67	45	29	28
Literacy Total	67	67	45	29	28

Professional & Secondary Ed.

Secondary Education MED	14	15	9	4	7
Professional & Secondary Ed Graduate Total	14	15	9	4	7
Professional & Secondary Ed. Total	14	15	9	4	7

Special Education

Special Education BSED	99	28			
Special Education: 7-12 BSED		1	7	5	5
Special Education: PK-8 BSED		33	87	130	105
Special Education Undergraduate Total	99	62	94	135	110
Special Education MED	23	30	17	11	11
Special Education MED (online)			7	8	26
Special Education MED (Phila)				2	1
Special Education Graduate Total	23	30	24	21	38
Special Education Total	122	92	118	156	148
No School: COESW Undergraduate Total	457	281	402	440	334
No School: COESW Graduate Total	222	212	240	143	175
No School: COESW Total	679	493	642	583	509

School of Social Work

Social Work	2011-12	2012-13	2013-14	2014-15	2015-16
Social Work BSW	42	56	47	39	30
Social Work BSW (Phila)					5
Social Work Undergraduate Total	42	56	47	39	35
Social Work Graduate					
Social Work MSW	38	53	54	57	48
Social Work MSW (Phila)					19
Social Work MSW Advanced Stand				17	13
Social Work Graduate Total	38	53	54	74	80
Social Work Total	80	109	101	113	115
School of Social Work Undergraduate Total	42	56	47	39	35
School of Social Work Graduate Total	38	53	54	74	80
School of Social Work Total	80	109	101	113	115
College of Education & Social Work Undergraduate Total	499	337	449	479	369
College of Education & Social Work Graduate Total	260	265	294	217	255
College of Education & Social Work Total	759	602	743	696	624

College of Health Sciences

No School: CHEAL

Communicative Disorders

Communication Sci & Disord BA	41	59	75	90	88
Communicative Disorders Undergraduate Total	41	59	75	90	88
Speech-Language Pathology MA	32	28	27	27	27
Communicative Disorders Graduate Total	32	28	27	27	27
Communicative Disorders Total	73	87	102	117	115

Kinesiology

Exercise Science BS	44	37	44	47	39
Health & Physical Educ BS	88	80	60	47	21
Pre-Chiropractic BS			3	1	

Kinesiology Continued...

	2011-12	2012-13	2013-14	2014-15	2015-16
Pre-Occupational Therapy BS	5	14	26	28	44
Pre-Physical Therapy BS	16	34	55	44	61
Kinesiology Undergraduate Total	153	165	188	167	165
Hlth&Phys Ed: Exercise Phys MS	7	10	3	1	
MS in Ex Sport Phys: Athl Trng		2	6	6	8
MS in Exercise/Sport Physiolog		2	4	7	15
MS in Physical Education		1	1		
Kinesiology Graduate Total	7	15	14	14	23
Kinesiology Total	160	180	202	181	188

Nutrition

Nutrition and Dietetics BS	85	103	115	140	151
Nutrition Undergraduate Total	85	103	115	140	151
Public Health MPH: Nutrition	2	14	16	18	30
Nutrition Graduate Total	2	14	16	18	30
Nutrition Total	87	117	131	158	181

Sports Medicine Department

Athletic Training BS	35	32	41	42	42
Sports Medicine Department Undergraduate Total	35	32	41	42	42
Sports Medicine Department Total	35	32	41	42	42
No School: CHEAL Undergraduate Total	314	359	419	439	446
No School: CHEAL Graduate Total	41	57	57	59	80
No School: CHEAL Total	355	416	476	498	526

School of Nursing

Nursing

Nursing BSN	108	74	57	30	53
Nursing BSN: 2nd degree		1	26	39	32
Nursing BSN: RN	71	84	63	73	42
Nursing Undergraduate Total	179	159	146	142	127

Nursing Continued...

	2011-12	2012-13	2013-14	2014-15	2015-16
Nursing MSN	10	17	6	7	3
Public Hlth Nursing MSN: Admin			2	3	1
Public Hlth Nursing MSN: Integ	1		1		
Nursing Graduate Total	11	17	9	10	4
Nursing Total	190	176	155	152	131
School of Nursing Undergraduate Total	179	159	146	142	127
School of Nursing Graduate Total	11	17	9	10	4
School of Nursing Total	190	176	155	152	131

School of Public Health

Health

Environmental Health BS	13	7	8	9	23
Health Sci: General BS	11	17	14	17	20
Hlth Sci: Respiratory Care BS	22	27	22	25	25
Public Health:Health Promot BS	29	22	38	37	56
Health Undergraduate Total	75	73	82	88	124
Health: School Health MED	10	12	9	8	4
Public Health MPH: Community	32	40	36	28	36
Public Health MPH: Environment	5	6	2	5	7
Public Health MPH: Integrative	4	9	2	10	1
Public Health MPH: Management		8	14	21	16
Public Health MPH:Admin	13	12	1		
Health Graduate Total	64	87	64	72	64
Health Total	139	160	146	160	188
School of Public Health Undergraduate Total	75	73	82	88	124
School of Public Health Graduate Total	64	87	64	72	64
School of Public Health Total	139	160	146	160	188
College of Health Sciences Undergraduate Total	568	591	647	669	697
College of Health Sciences Graduate Total	116	161	130	141	148
College of Health Sciences Total	684	752	777	810	845

College of Sciences & Mathematics

School of Science & Mathematics

Anthropology & Sociology

	2011-12	2012-13	2013-14	2014-15	2015-16
Anthropology BA	8	20	12	20	7
Sociology BA	35	51	59	43	43
Anthropology & Sociology Undergraduate Total	43	71	71	63	50
Long-Term Hlth Care MPA	1				
Anthropology & Sociology Graduate Total	1				
Anthropology & Sociology Total	44	71	71	63	50

Biology

Biology BA	3		1	1	1
Biology BS	39	42	23	46	51
Biology BSED	7	7	8	6	5
Biology: Cell & Molecular BS	22	13	21	33	33
Biology: Ecology/Conserv BS	9	9	9	11	10
Biology: Marine Science				3	4
Biology: Medical Technology BS	2	3	2	2	3
Biology: Microbiology BS	3	10	11	8	9
Biology Undergraduate Total	85	84	75	110	116
Biology : Thesis MS	5	7	4	1	5
Biology MS	2	8	6	7	3
Biology Graduate Total	7	15	10	8	8
Biology Total	92	99	85	118	124

Chemistry

Biochemistry BS	6	9	4	5	8
Chemistry BS	4	12	12	13	15
Chemistry BSED		4	1	2	
Chemistry-Biology BS	13	13	12	9	12
Foren & Toxicol Chemistry BS	7	11	11	9	3
Chemistry Undergraduate Total	30	49	40	38	38
Chemistry Total	30	49	40	38	38

College of Sciences & Mathematics Continued...

Computer Science

	2011-12	2012-13	2013-14	2014-15	2015-16
Computer Science BS	17	23	45	27	47
Computer Science Undergraduate Total	17	23	45	27	47
Computer Science MS	7	5	6	13	16
Computer Science Graduate Total	7	5	6	13	16
Computer Science Total	24	28	51	40	63

Geology & Astronomy

Earth-Space Science BSED	5	7	4	4	2
Geoscience : Earth Systems BS	14	13	11	17	15
Geoscience: Geology BS	9	4	8	5	12
Geology & Astronomy Undergraduate Total	28	24	23	26	29
Geoscience MA	8	6	11	7	11
Geoscience MS					7
Geology & Astronomy Graduate Total	8	6	11	7	18
Geology & Astronomy Total	36	30	34	33	47

Mathematics

Mathematics BA	3	8	4	3	
Mathematics BSED	18	14	24	26	21
Mathematics: Actuarial Sci BS	4	3	15	15	14
Mathematics: Computational BS		4	1	3	1
Mathematics: Finance BS	2	2	6	6	5
Mathematics: Industrial BS	2	2	1	3	1
Mathematics: Pure Mathematics			1	3	1
Mathematics: Statistics BS	3	13	5	13	13
Mathematics Undergraduate Total	32	46	57	72	56
Applied Statistics MS	15	24	22	25	33
Mathematics MA	10	5	14	9	6
Mathematics Graduate Total	25	29	36	34	39
Mathematics Total	57	75	93	106	95

College of Sciences & Mathematics Continued...

Pharmaceutical Product Dev.

	2011-12	2012-13	2013-14	2014-15	2015-16
Pharmaceutical Product Dev BS	7	14	11	14	16
Pharmaceutical Product Dev. Undergraduate Total	7	14	11	14	16
Pharmaceutical Product Dev. Total	7	14	11	14	16

Physics

Physics BS	8	8	5	4	4
Physics BSED	2	2	1	4	
Physics-Engineering BS	2	1	3	3	1
Physics Undergraduate Total	12	11	9	11	5
Physics Total	12	11	9	11	5

Political Science

Poli Sci:Applied Pub Policy BA	7	10	4	6	8
Polit Sci : Int'l Relations BA	16	15	23	22	23
Political Sci. Gov. and Pol.	33	37	61	43	35
Political Science Undergraduate Total	56	62	88	71	66
Nonprofit Administration MSA	1				
Political Science Graduate Total	1				
Political Science Total	57	62	88	71	66

Psychology

Psychology BA	157	186	212	258	249
Psychology Undergraduate Total	157	186	212	258	249
Psychology: Clinical MA	15	24	16	11	19
Psychology: General MA	2	4	1	7	4
Psychology: Industrial MA	11	11	20	20	10
Psychology Graduate Total	28	39	37	38	33
Psychology Total	185	225	249	296	282
School of Science & Mathematics Undergraduate Total	467	570	631	690	672

School of Science & Mathematics Continued...

	2011-12	2012-13	2013-14	2014-15	2015-16
School of Science & Mathematics Graduate Total	77	94	100	100	114
School of Science & Mathematic Total	544	664	731	790	786
College of Science & Mathematics Undergraduate Total	467	570	631	690	672
College of Science & Mathematics Graduate Total	77	94	100	100	114
College of Sciences & Mathematics Total	544	664	731	790	786

School of Interdisciplinary & Graduate Studies

School of Interdisciplinary Studies

Liberal Studies Program

Liberal Studies: Arts & Sci BA	35	45	22	30	22
Liberal Studies: Sci/Math BS	9	12	6	9	13
Liberal Studies Program Undergraduate Total	44	57	28	39	35
Liberal Studies Program Total	44	57	28	39	35

Professional Studies Prog

Liberal Studies: Profession BS	221	206	240	214	201
Professional Studies Prog Undergraduate Total	221	206	240	214	201
Professional Studies Prog Total	221	206	240	214	201
School of Interdisciplinary Studies Total	265	263	268	253	236
School of Interdisciplinary & Graduate Studies Undergradate Total	265	263	268	253	236
School of Interdisciplinary & Graduate Studies Graduate total					
School of Interdisciplinary & Graduate Studies Total	265	263	268	253	236

University Undergraduate Total	2869	2972	3232	3383	3407
University Graduate Total	645	714	740	693	724
Universtiy Total	3514	3686	3972	4076	4131



TUITION & FEES

Tuition and Fees by Semester

Tuition Category	2011-12	2012-13	2013-14	2014-15	2015-16	2016-17
Undergraduate Tuition						
Full-Time In-State	\$ 3,120.00	\$ 3,214.00	\$ 3,311.00	\$ 3,410.00	\$ 3,530.00	\$ 3,619.00
Full-Time Out-of-State	\$ 7,800.00	\$ 8,035.00	\$ 8,278.00	\$ 8,525.00	\$ 8,825.00	\$ 9,048.00
Per Credit In-State	\$ 260.00	\$ 268.00	\$ 276.00	\$ 284.00	\$ 294.00	\$ 302.00
Per Credit Out-of-State	\$ 650.00	\$ 670.00	\$ 690.00	\$ 710.00	\$ 735.00	\$ 754.00
Undergraduate Fees						
Full-Time In-State	\$ 938.65	\$ 1,096.05	\$ 1,114.00	\$ 1,161.90	\$ 1,200.78	\$ 1,241.20
Full-Time Out-of-State	\$ 1,027.65	\$ 1,188.05	\$ 1,209.00	\$ 1,271.90	\$ 1,314.78	\$ 1,358.20
Per Credit In-State	\$ 157.72	\$ 91.41	\$ 92.00	\$ 97.24	\$ 100.90	\$ 103.76
Per Credit Out-of-State	\$ 165.72	\$ 99.41	\$ 100.00	\$ 106.24	\$ 109.90	\$ 113.76
Graduate Tuition						
Full-Time In-State	\$ 3,744.00	\$ 3,861.00	\$ 3,978.00	\$ 4,086.00	\$ 4,230.00	\$ 4,347.00
Full-Time Out-of-State	\$ 5,616.00	\$ 5,796.00	\$ 5,967.00	\$ 6,129.00	\$ 6,345.00	\$ 6,525.00
Per Credit In-State	\$ 416.00	\$ 429.00	\$ 442.00	\$ 454.00	\$ 470.00	\$ 483.00
Per Credit Out-of-State	\$ 624.00	\$ 644.00	\$ 663.00	\$ 681.00	\$ 705.00	\$ 725.00
Graduate Fees*						
Full-Time In-State	\$ 892.32	\$ 1,054.40	\$ 1,067.00	\$ 1,115.25	\$ 1,156.13	\$ 1,199.55
Full-Time Out-of-State	\$ 982.32	\$ 1,144.40	\$ 1,157.00	\$ 1,223.25	\$ 1,264.13	\$ 1,307.55
Per Credit In-State	\$ 100.37	\$ 105.05	\$ 106.00	\$ 110.78	\$ 114.75	\$ 119.05
Per Credit Out-of-State	\$ 110.37	\$ 115.05	\$ 116.00	\$ 122.78	\$ 126.75	\$ 131.05
Residence Halls						
Meal Plan**	\$ 1,218.00	\$ 1,247.00	\$ 1,272.00	\$ 1,293.00	\$ 1,326.57	\$ 1,396.54

*For information about special graduate program rates, and tuition & fees for Doctoral and Philadelphia campus programs please visit http://www.wcupa.edu/_information/afa/fiscal/bursar/tuition.asp .

*14 Meals per week + \$250 Flex Dollars.

For detail information on meal plans please visit http://wcupa.edu/_information/afa/fiscal/bursar/tuition.asp#MealPlans .



LIBRARY RESOURCES

Library Statistics
FY 2012-2013 through 2015-2016

Holdings	2012-2013	2013-2014	2014-2015	2015-2016	One Year Difference
Library Holdings					
Volumes	757,875	758,344	745,645	737,705	-7,940
Microforms	926,544	926,596	926,629	768,407	-158,222
E-Books	654,989	844,919	766,280	1,011,265	244,985
Audio/Video units*	227,395	255,249	835,363	834,616	-747
Circulation (General & Reserve)	57,195	68,218	63,802	58,402	-5,400
Holdings Total	2,566,803	2,905,718	3,408,323	3,418,006	9,683
Total FTE Staff (includes student assistants)	45.58	49.13	50.37	47.87	-2.50

*Includes tapes, CDs, DVDs

Other Library Materials	2014-2015	2015-2016
Items Digitized by WCU Library	4,690	7,563
Digital Art Images	2,576,861	2,609,072
Digital Pamphlets, Reports, etc.	2,916,598	2,953,055
Digital Manuscript Pages	6,400,000	6,480,000

For questions /comments or recommendations for other data to include in the Fact Book, please contact Nilima Inamdar, Office of Institutional Research, WCU, 887, Matlack Street, West Chester PA 19381. Email: ninamdar@wcupa.edu Phone: 610-436-2456.